



EtherWe-1000U

USB 2.0 Ethernet Adapter

User's Manual




[www.airlive.com](http://www.airlive.com)

# Declaration of Conformity

We, Manufacturer/Importer  
**OvisLink Corp.**  
**5F., NO.6, Lane 130, Min-Chuan Rd.,**  
**Hsin-Tien City, Taipei County, Taiwan**

Declare that the product  
**USB2.0 Ethernet Adapter**  
**AirLive EtherWe-1000U**  
**is in conformity with**

In accordance with 89/336 EEC-EMC Directive and 1999/5 EC-R & TTE Directive

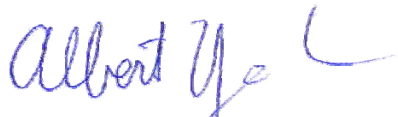
<u>Clause</u>	<u>Description</u>
■ EN 55022:1998/A1 :2000	Limits and methods of measurement of radio disturbance characteristics of information technology equipment
■ EN 61000-3-2:2000	Disturbances in supply systems caused by household appliances and similar electrical equipment "Harmonics"
■ EN 61000-3-3:1995/ A1:2001	Disturbances in supply systems caused by household appliances and similar electrical equipment "Voltage fluctuations"
■ EN 55024:1998/A1 :2001	Information Technology equipment-Immunity characteristics-Limits And methods of measurement
■ CE marking	

## Manufacturer/Importer

Signature :

Name :

Position/ Title :



Albert Yeh

Vice President

(Stamp)

Date : **2008/3/11**

## AirLive EtherWe-1000U CE Declaration Statement

Country	Declaration	Country	Declaration
<b>cs</b> Česky [Czech]	OvisLink Corp. tímto prohlašuje, že tento AirLive EtherWe-1000U je ve shodě se základními požadavky a dalšími příslušnými ustanoveními směrnice 1999/5/ES.	<b>lt</b> Lietuvių [Lithuanian]	Šiuo OvisLink Corp. deklaruoja, kad šis AirLive EtherWe-1000U atitinka esminius reikalavimus ir kitas 1999/5/EB Direktyvos nuostatas.
<b>da</b> Dansk [Danish]	Undertegnede OvisLink Corp. erklærer herved, at følgende udstyr AirLive EtherWe-1000U overholder de væsentlige krav og øvrige relevante krav i direktiv 1999/5/EF.	<b>nl</b> Nederlands [Dutch]	Hierbij verklaart OvisLink Corp. dat het toestel AirLive EtherWe-1000U in overeenstemming is met de essentiële eisen en de andere relevante bepalingen van richtlijn 1999/5/EG.
<b>de</b> Deutsch [German]	Hiermit erkläre OvisLink Corp., dass sich das Gerät AirLive EtherWe-1000U in Übereinstimmung mit den grundlegenden Anforderungen und den übrigen einschlägigen Bestimmungen der Richtlinie 1999/5/EG befindet.	<b>mt</b> Malti [Maltese]	Hawnhekk, OvisLink Corp, jiddikjara li dan AirLive EtherWe-1000U jikkonforma mal-ftigijiet essenzjali u ma provvedimenti oħrajn rilevanti li hemm fid-Dirrettiva 1999/5/EC.
<b>et</b> Eesti [Estonian]	Käesolevaga kinnitab OvisLink Corp. seadme AirLive EtherWe-1000U vastavust direktiivi 1999/5/EÜ põhinõuetele ja nimetatud direktiivist tulenevatele teistele asjakohastele sätetele.	<b>hu</b> Magyar [Hungarian]	Az OvisLink Corporation kijelenti, hogy az AirLive EtherWe-1000U megfelel az 1999/05/CE irányelv alapvető követelményeinek és egyéb vonatkozó rendelkezéseinek.
<b>en</b> English	Hereby, OvisLink Corp., declares that this AirLive EtherWe-1000U is in compliance with the essential requirements and other relevant provisions of Directive 1999/5/EC.	<b>pl</b> Polski [Polish]	Niniejszym OvisLink Corp oświadcza, że AirLive EtherWe-1000U jest zgodny z zasadniczymi wymogami oraz pozostałymi stosownymi postanowieniami Dyrektywy 1999/5/EC.
<b>es</b> Español [Spanish]	Por medio de la presente OvisLink Corp. declara que el AirLive EtherWe-1000U cumple con los requisitos esenciales y cualesquiera otras disposiciones aplicables o exigibles de la Directiva 1999/5/CE.	<b>pt</b> Português [Portuguese]	OvisLink Corp declara que este AirLive EtherWe-1000U está conforme com os requisitos essenciais e outras disposições da Directiva 1999/5/CE.
<b>el</b> Ελληνική [Greek]	ΜΕ ΤΗΝ ΠΑΡΟΥΣΑ OvisLink Corp. ΔΗΛΩΝΕΙ ΟΤΙ AirLive EtherWe-1000U ΣΥΜΜΟΡΦΩΝΕΤΑΙ ΠΡΟΣ ΤΙΣ ΟΥΣΙΩΔΕΙΣ ΑΠΑΙΤΗΣΕΙΣ ΚΑΙ ΤΙΣ ΛΟΙΠΕΣ ΣΧΕΤΙΚΕΣ ΔΙΑΤΑΞΕΙΣ ΤΗΣ ΟΔΗΓΙΑΣ 1999/5/EK.	<b>sl</b> Slovensko [Slovenian]	OvisLink Corp izjavlja, da je ta AirLive EtherWe-1000U v skladu z bistvenimi zahtevami in ostalimi relevantnimi določili direktive 1999/5/ES.
<b>fr</b> Français [French]	Par la présente OvisLink Corp. déclare que l'appareil AirLive EtherWe-1000U est conforme aux exigences essentielles et aux autres dispositions pertinentes de la directive 1999/5/CE	<b>sk</b> Slovensky [Slovak]	OvisLink Corp týmto vyhlasuje, že AirLive EtherWe-1000U spĺňa základné požiadavky a všetky príslušné ustanovenia Smernice 1999/5/ES.
<b>it</b> Italiano [Italian]	Con la presente OvisLink Corp. dichiara che questo AirLive EtherWe-1000U è conforme ai requisiti essenziali ed alle altre disposizioni pertinenti stabilite dalla direttiva 1999/5/CE.	<b>fi</b> Suomi [Finnish]	OvisLink Corp vakuuttaa täten että AirLive EtherWe-1000U tyyppinen laite on direktiivin 1999/5/EY oleellisten vaatimusten ja sitä koskevien direktiivin muiden ehtojen mukainen
<b>lv</b> Latviski [Latvian]	Ar šo OvisLink Corp. deklarē, ka AirLive EtherWe-1000U atbilst Direktīvas 1999/5/EK būtiskajām prasībām un citiem ar to saistītajiem noteikumiem.	<b>is</b> Íslenska [Icelandic]	Hér með lýsir OvisLink Corp yfir því að AirLive EtherWe-1000U er í samræmi við grunnkröfur og aðrar kröfur, sem gerðar eru í tilskipun 1999/5/EC.
<b>sv</b> Svenska [Swedish]	Härmed intygar OvisLink Corp. att denna AirLive EtherWe-1000U står i överensstämmelse med de väsentliga egenskapskrav och övriga relevanta bestämmelser som framgår av direktiv 1999/5/EG.	<b>no</b> Norsk [Norwegian]	OvisLink Corp erklærer herved at utstyret AirLive EtherWe-1000U er i samsvar med de grunnleggende krav og øvrige relevante krav i direktiv 1999/5/EF.

A copy of the full CE report can be obtained from the following address:

**OvisLink Corp.**  
**5F, No.6 Lane 130,**  
**Min-Chuan Rd, Hsin-Tien City,**  
**Taipei, Taiwan, R.O.C.**

This equipment may be used in AT, BE, CY, CZ, DK, EE, FI, FR, DE, GR, HU, IE, IT, LV, LT, LU, MT, NL, PL, PT, SK, SI, ES, SE, GB, IS, LI, NO, CH, BG, RO, TR

## Safety Instructions

Always read the safety instructions carefully

- Keep this User's Manual for future reference
- Keep this equipment away from humidity
- If any of the following situation arises, get the equipment checked by a service technician:
  - The equipment has been exposed to moisture.
  - The equipment has been dropped and damaged.
  - The equipment has obvious sign of breakage.
  - The equipment has not been working well or you cannot get it work according to User's Manual.

## Copyright Statement

No part of this publication may be reproduced in any form by any means without the prior written permission. Other trademarks or brand names mentioned herein are trademarks or registered trademarks of their respective companies.

## Disclaimer

Information in this document is subject to change without notice. The manufacturer does not make any representations or warranties (implied or otherwise) regarding the accuracy and completeness of this document and shall in no event be liable for any loss of profit or any commercial damage, including but not limited to special, incidental, consequential, or other damage.

All trademarks, trade names and copyrights are properties of their respective owners.

# Table of Content

<b>Chapter 1: Introduction .....</b>	<b>3</b>
1-1 Features .....	3
1-2 Package Contents .....	3
1-3 System Requirements .....	3
1-4 LED Status .....	4
<b>Chapter 2: Installation .....</b>	<b>5</b>
2-1 On Wii (Game station) .....	5
2-2 On Windows 2000/XP/Vista .....	5
2-3 Verifying the Driver Installation on Windows .....	6
2-4 On MAC OS X 10.x .....	7
<b>Chapter 3: Specification .....</b>	<b>11</b>
<b>Chapter 4: Regulatory Compliance.....</b>	<b>12</b>

# Chapter 1: Introduction

The USB 2.0 Ethernet Adapter allows your computer instantly connect to a 10/100Mbps network through simply a USB port; no hassle to open up your computer case as is required for an internal card now! It's also an ideal USB-to-LAN alternative for gaming console that needs network access in an environment lacking wireless capability. Compared with USB 1.1 standard which offers 12 Mbps speed, the adapter's compliance with USB 2.0 (480Mbps) ensures true 10/100 Mbps network speed without any compromise. Furthermore, the adapter is in compact size and is USB bus-powered; it requires no external power adapter, so that you can use it without crowding your workspace at all.

## 1-1 Features

- Compliant with USB 2.0 and USB 1.1 specifications
- Compliant with IEEE 802.3 (10Base-T) and 802.3u (100Base-TX) standards
- Supports both full-duplex and half-duplex operations
- Supports suspend mode and remote wakeup via link-up and magic packet
- Powered by USB port. No external power adapter required
- Equips with diagnostic LEDs
- Plug & Play installation

## 1-2 Package Contents

Before installation, please check the items of the package. The package should contain the following items:

- USB2.0 Ethernet Adapter x1
- Driver CD x1
- Quick Installation Guide x1

## 1-3 System Requirements

- IBM compatible Pentium-233MHz or faster PC or Mac
- 64 MB RAM or more
- One available USB port
- Windows® 2000, XP, Vista 32/64-bit; Mac OS X 10.x

## 1-4 LED Status

LED	Color	Description
Power	Green	On for connection to a 100Mbps network. Off for connection to a 10Mbps or not connected.
Link	Green	LAN activity. Blinking when there is data flow between LAN and the host computer.

# Chapter 2: Installation

## 2-1 On Wii (Game station)

1. Just connect the EtherWe-1000U to a free USB port of the Wii (Game Station) and the default setting is DHCP client mode.
2. It can be modify via Wii's configuration, please see the detail on Wii's manual.

## 2-2 On Windows 2000/XP/Vista

---

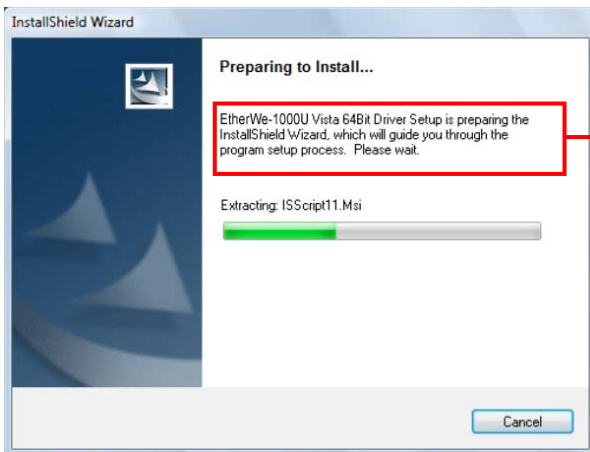
**Caution: DO NOT** connect the Ethernet adapter to your computer before you install the provided driver. You will be instructed to do so later.

---

1. Insert the provided CD into your disc drive. Then locate and double-click the **setup.exe** file under **x:\Driver\Windows** where x is your disc drive letter.

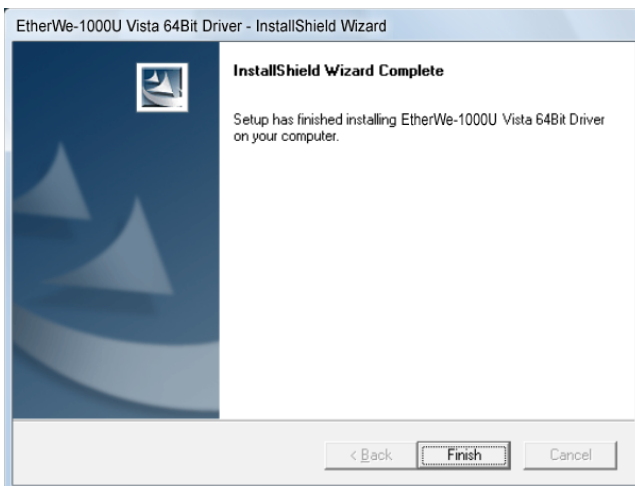
On Windows Vista, click **Allow** at the User Account Control screen.

2. Wait a while for the program to install the driver.
- 3.

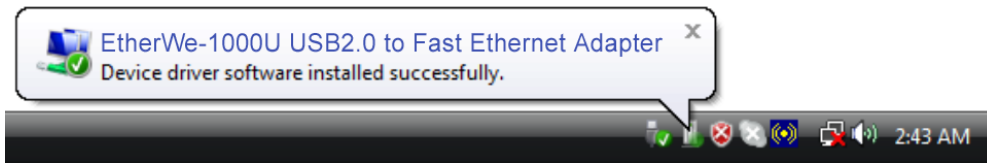


Actual strings depend on your operation system. These screen shots are from Windows Vista and might vary slightly for each operation system.

When the installation is done, click **Finish**. (On Windows 2000, you will need to restart your computer as prompted.)



4. Connect the Ethernet adapter's USB end to a free USB port of your computer.
- Then a pop-up message will appear in the notification area indicating the installation is complete.



Now the installation is complete. You can connect the adapter to a network device by an Ethernet cable:

1. Connect an Ethernet cable to the Ethernet port on the adapter.
2. Connect the other end of the Ethernet cable to your network hub, switch or router.

The Link LED should light up green to indicate a proper physical connection between the adapter and the network. If the Link LED doesn't light up, please verify the cable connections between all the network devices.

## 2-3 Verifying the Driver Installation on Windows

Once you finish the installation, you can open Windows **Device Manager** to verify if your Ethernet adapter is properly installed. To access the **Device Manager**:

- On Windows Vista: Right-click **Computer** on the desktop and click **Properties** > **Device Manager**.
- On Windows XP/2000: Right-click My Computer on the desktop and click Properties > (Hardware) > Device Manager.

In the **Network adapters** group, an item named **EtherWe-1000U USB2.0 to Fast Ethernet Adapter** should be displayed.

If there is a question or exclamation mark next to that item, then the driver is not properly installed. Please delete the item, select the **Delete the driver software for this device** option (if provided), unplug the adapter from your computer and then repeat the installation steps.

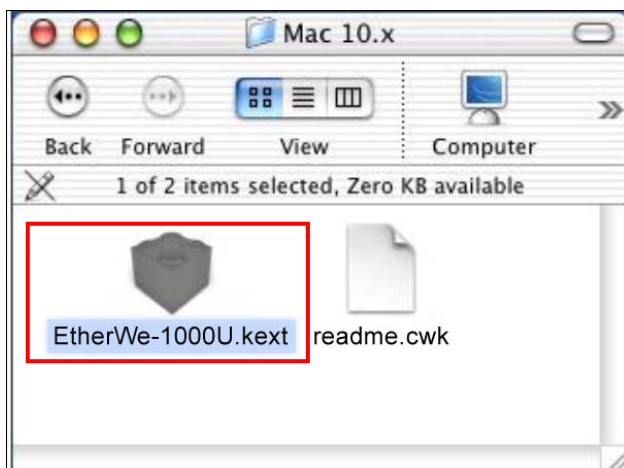


## 2-4 On MAC OS X 10.x

1. Insert the provided driver CD into your CD-ROM drive. Double-click the CD and navigate to the directory of **\Driver\Mac10.x**.



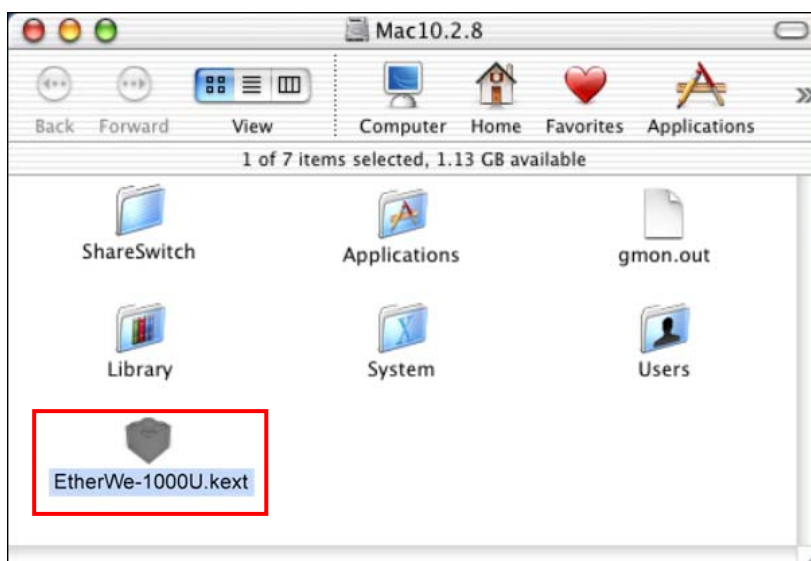
2. In the directory of Mac10.x, select and copy the folder named EtherWe-1000U.kext.



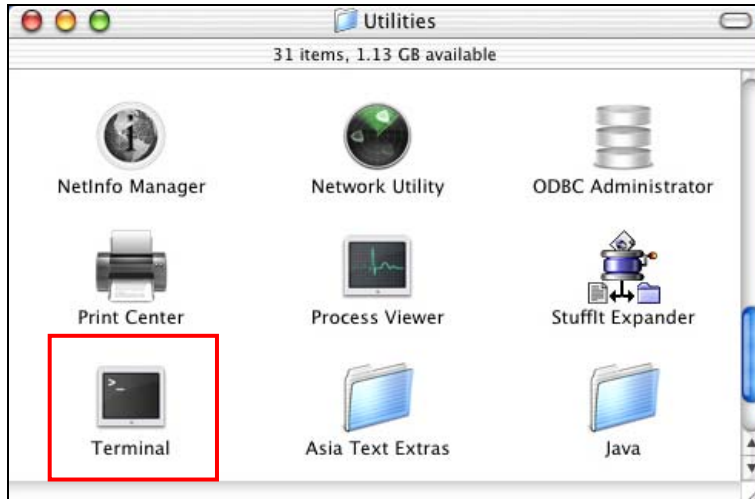
3. On the desktop, double-click the start-up drive.



4. Paste the **EtherWe-1000U.kext** to the root directory of the disk.

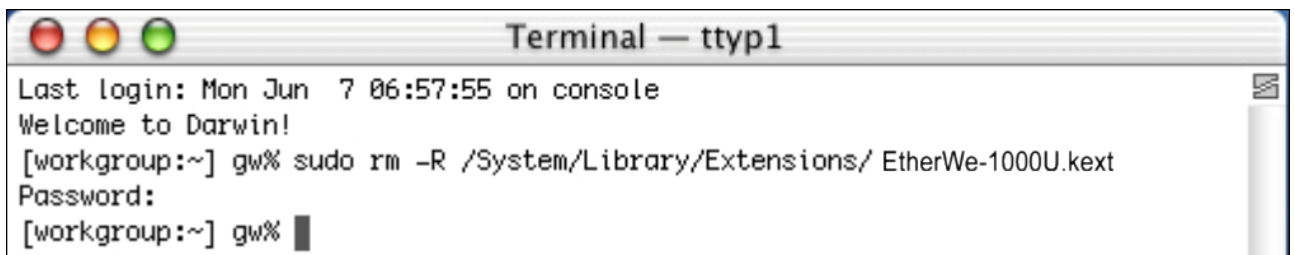


5. Open the terminal application by clicking **Go > Application > Utilities > Terminal**.



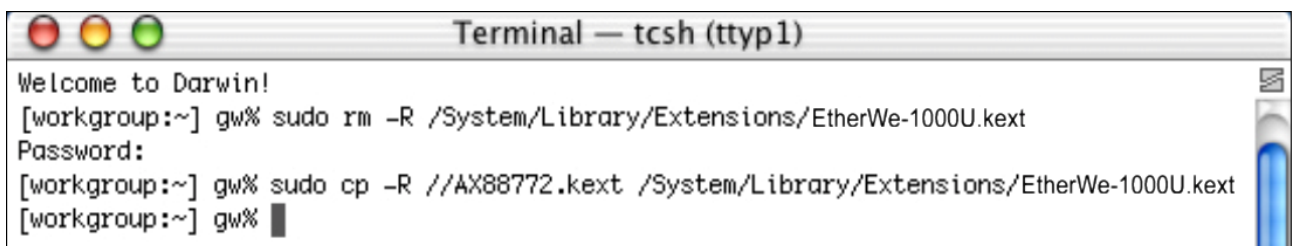
6. If there is one old driver in the **Extensions** directory, please remove it first by executing the command:  
`sudo rm -R /System/Library/Extensions/EtherWe-1000U.kext`

You will need to enter your password as prompted.

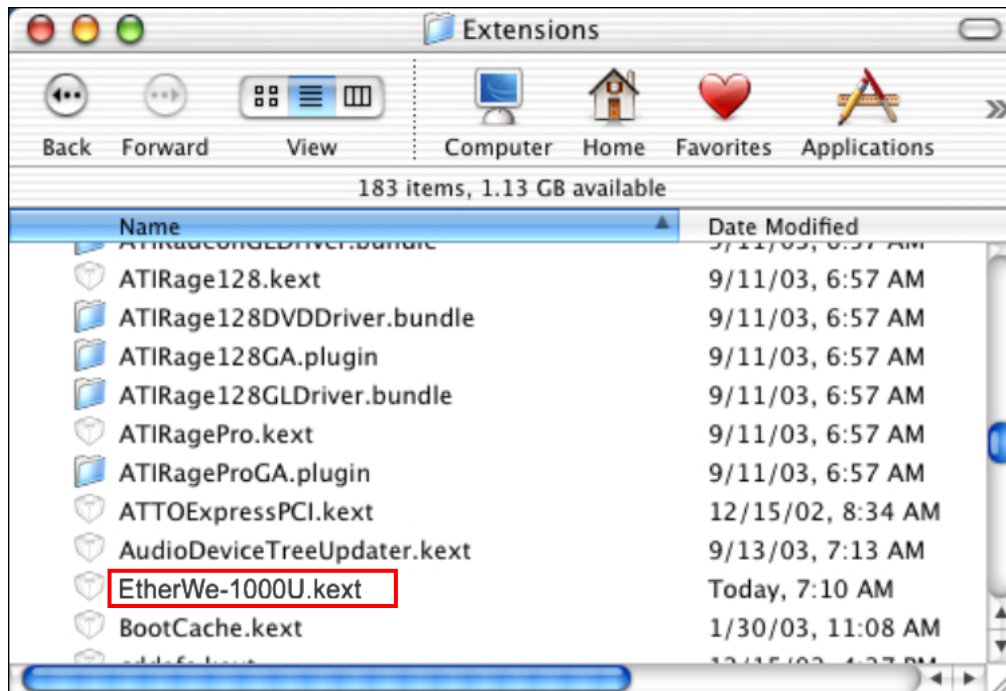


7. Paste the driver to the **Extensions** folder by the command line below:

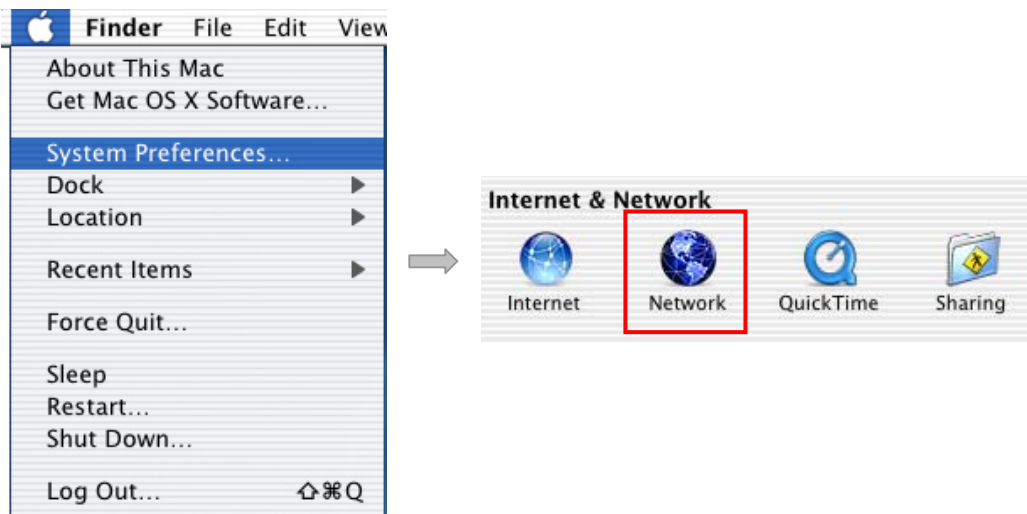
`sudo cp -R //EtherWe-1000U.kext /System/Library/Extensions/EtherWe-1000U.kext`



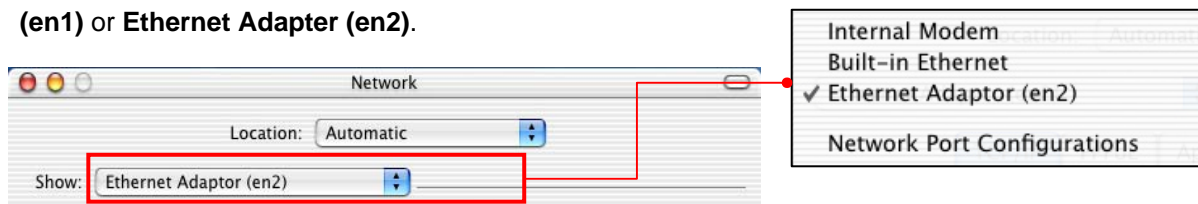
To verify the installation, you can go to **/System/Library/Extensions** to check if **EtherWe-1000U.kext** is present.



8. Connect the Ethernet adapter to a free USB port.
9. Reboot your Mac.
10. Start System Preferences and select Network.



11. You will find that a new Ethernet network interface is available. It's usually named **Ethernet Adaptor (en1)** or **Ethernet Adaptor (en2)**.

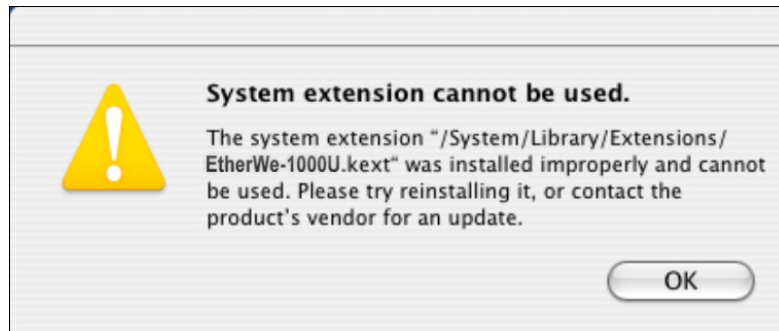


Now you are ready to configure the network settings for network access.



You must use the command line to install the driver as instructed above. Simply copy and paste **EtherWe-1000U.kext** to the **Extensions** folder will lead to an improper installation as the warning message below:

---



Now the installation is complete. You can connect the adapter to a network device by an Ethernet cable:

1. Connect an Ethernet cable to the Ethernet port on the adapter.
2. Connect the other end of the Ethernet cable to your network hub, switch or router.

The Link LED should light up green to indicate a proper physical connection between the adapter and the network. If the Link LED doesn't light up, please verify the cable connections between all the network devices.

## Chapter 3: Specification

Items	Descriptions
Network Standards	IEEE 802.3: 10Base-T IEEE 802.3u: 100Base-T
Data Transfer Rates	Ethernet: 10Mbps/20Mbps (Half/Full Duplex) Fast Ethernet: 100Mbps/200Mbps (Half/Full Duplex)
Data Bus	USB 2.0 (1.1 compliant)
LED Indicators	Power, Link
Power Consumption	850mW
Power Management	Suspend mode, hibernation mode
Network Interface	Female RJ45 jack
RAM	Embedded 20KB SRAM for RX packet buffering and 20KB SRAM for TX packet buffering
Operating System Support	Windows 2000, XP, Vista 32/64-bit; Mac OS X 10.x
Dimensions	72 x 52x 26 mm (L x W x H)
Weight	58g
Operating Temperature	0°C to 70°C
Certifications	FCC, CE

\* Specification is subject to change without further notice.

# Chapter 4: Regulatory Compliance

## FCC Conditions

This equipment has been tested and found to comply with Part 15 of the FCC Rules. Operation is subject to the following two conditions:

- (1) This device may not cause harmful interference
- (2) This device must accept any interference received. Including interference that may cause undesired operation.

## CE

This equipment is in compliance with the requirements of the following regulations: EN 55 022: CLASS B

## WEEE Information

For EU (European Union) member users:

According to the WEEE (Waste electrical and electronic equipment) Directive, do not dispose of this product as household waste or commercial waste. Waste electrical and electronic equipment should be appropriately collected and recycled as required by practices established for your country. For information on recycling of this product, please contact your local authorities, your household waste disposal service or the shop where you purchased the product.

