



WL-1600USB

**High Power Wireless 11G
USB Dongle**

User's Manual



www.airlive.com

USING THIS DOCUMENT

This document provides detailed user guidelines for Wireless LAN USB Adapter operation and setting-up. Though every effort has been made to ensure that this document is up-to-date and accurate, more information may have become available subsequent to the production of this guide.

Content

Chapter 1 Introduction	1
Chapter 2 Specifications	2
Chapter 3 Installation/ Uninstallation	3
3.1 Installation	3
3.2 Uninstallation	7
Chapter 4 RtWLAN: Wireless LAN Management GUI	9
4.1 Introduction of Main Window	9
4.2 Station Mode	17
4.3 AP Mode	26

Chapter 1 Introduction

Thank you for purchasing Wireless LAN USB Adapter. Wireless LAN USB Adapter is a perfect combination of both performance and cost-effective product introduced. It is sincerely hoped that you can enjoy the wireless world through this solidly profiled wireless adapter.

It provides a full solution of all the IEEE 802.11 b/g protocols, that pass the WiFi tests and are compatible with all the wireless products with WiFi logo. If you have a Wireless LAN USB Adapter on hand, it means you can connect to the wireless world without any difficulty.

It also provides all the data rates in the IEEE 802.11 b/g standards, with both short and long preambles to ensure the compatibility of legacy wireless products and new ones, saving the panic works for end users to find compatible products.

Since the security issue has become one of the most important one in the wireless society, it provides you with the full security coverage from the 64/128bits WEP encryptions, second generation WPA-PSK encryption, to the most advanced WPA2-AES encryption. WPA2 is the latest security standard currently approved by WiFi standards.

Saving mode, Adhoc wireless Lan, Wake on Lan (WOL) and other exciting features are also included in this Wireless LAN USB Adapter. This user manual will guide you through these exciting features in the following chapters and we is believed that you will be greatly satisfied with its performance and ease of use.

Chapter 2 Specifications

Host system connections

Interface	Fully complies with USB 2.0 or 1.1
USB data transfer rate	USB high speed (480Mbps), and full speed (12Mbps)

Wireless LAN (WLAN) environment connections

WLAN Interface	Multimode features
	Fully complies with IEEE 802.11 b/g specifications
WLAN transfer rate	802.11 b:DQPSK with data scrambling capability to provide data rate of 1,2,5.5 and 11Mbps
	802.11 g:A high-speed Fast Fourier Transform(FFT)/Inverse Fast Fourier Transform(IFFT) provide data rate of 6,9,12,18,24,36,48 and 54Mbps
WLAN Frequency Band	2.4 ~ 2.497 GHz ((Industrial Scientific Medical Band)
Operation Channel	Channel 1 ~ 11
Coverage Area	Indoors:100ft with straight path
Compatibility	Fully compatible to IEEE 802.11 b/g devices
Security	Hardware-based IEEE 802.11i encryption/decryption engine, including 64-bit/128-bit WEP, TKIP, and AES
Antenna	Detachable dipolar antenna
LED present (Green/Red light)	On: link is on
	Off: link is off
	Quick blinking: data transition
	Slow blinking with 5 times: scan wireless nodes
Wake on WLAN	Wake up system by wireless LAN(AP mode)

SYSTEM REQUIREMENTS

Windows System : Windows 98SE, Me, 2000, XP 32/64 bit, Vista 32/64 bit

PCs must have a device driver installed. It allows you to communicate with WLAN Mini USB Adapter.

PACKAGE CONTENTS

1. Wireless LAN USB Adapter
2. Installation Software CD
3. User Manual

Chapter 3 Installation/ Uninstallation

Warning! Do not cover or block the airflow to the adapter. The adapter will reach a high temperature during use.

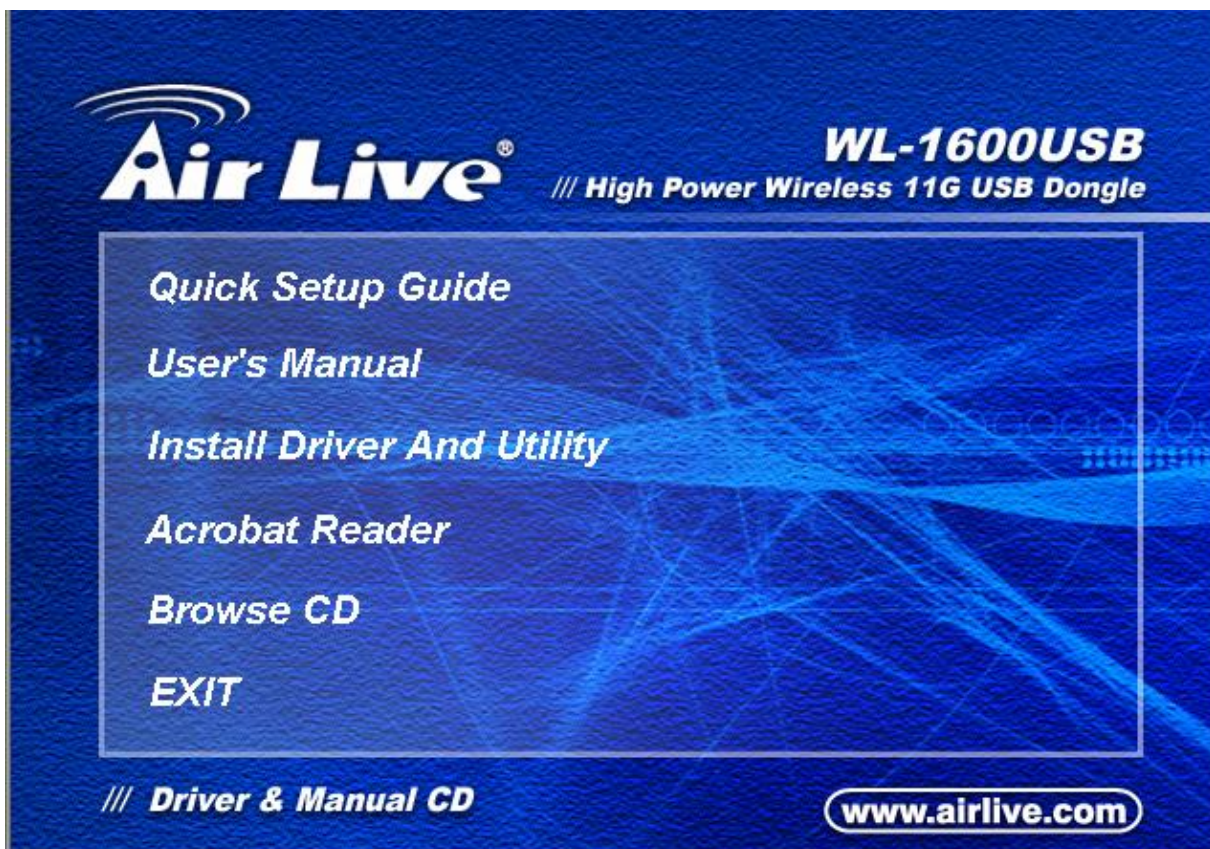
3.1 Installation

Before you proceed with the installation, please notice the following descriptions.

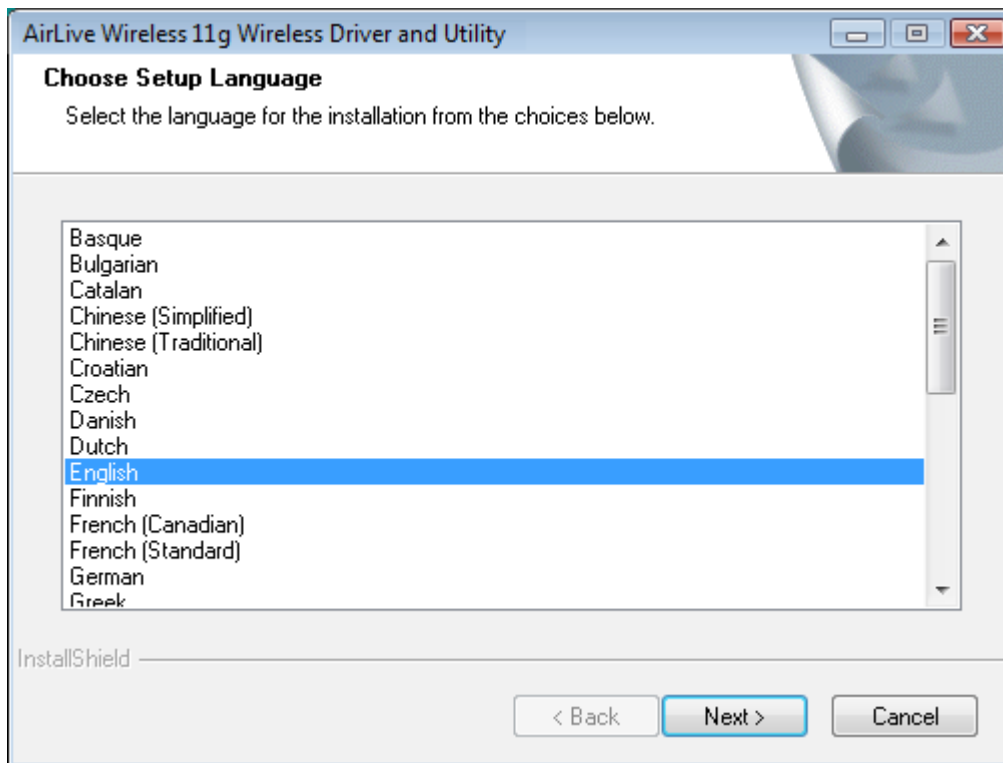
Note1: The following installation was operated under Windows Vista. (Procedures are similar for Windows 98SE/Me/2000/XP.)

Note2: If you have installed the WLAN USB driver & utility before, please uninstall the old version first.

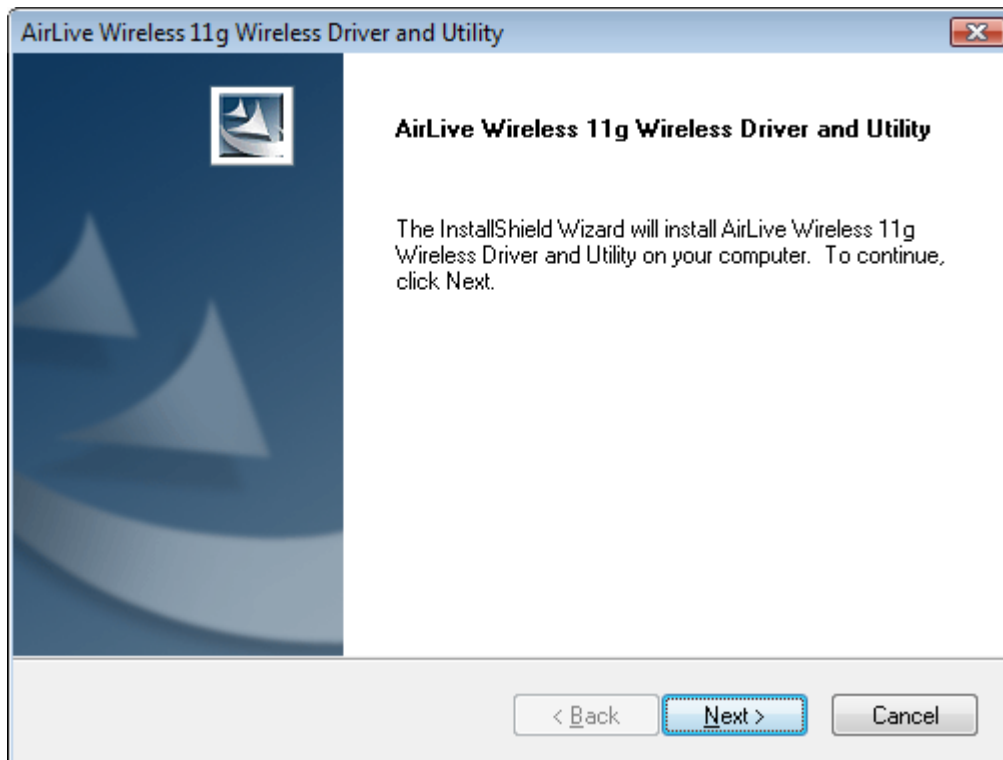
1. Do not plug the wireless LAN USB adapter into your computer USB port before installing the software program. Insert the software program CD , then auto installation window pops up on following:
2. While the following screen pops out, click Install Driver And Utility



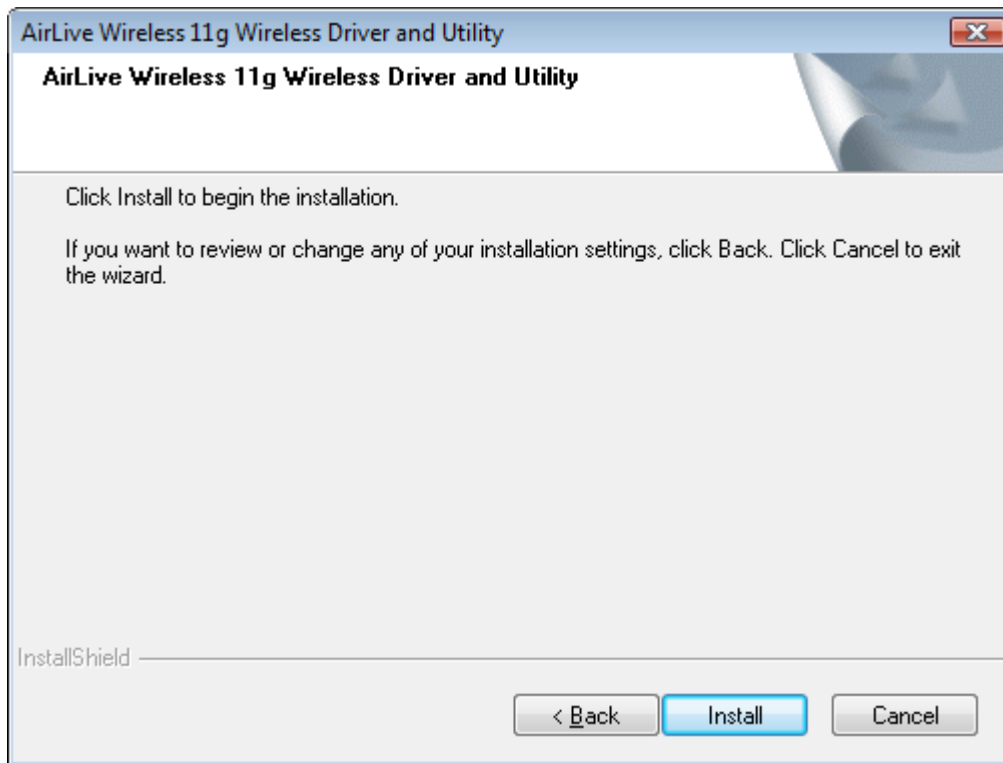
3. Choose a set up language. Click Next to process the installation.



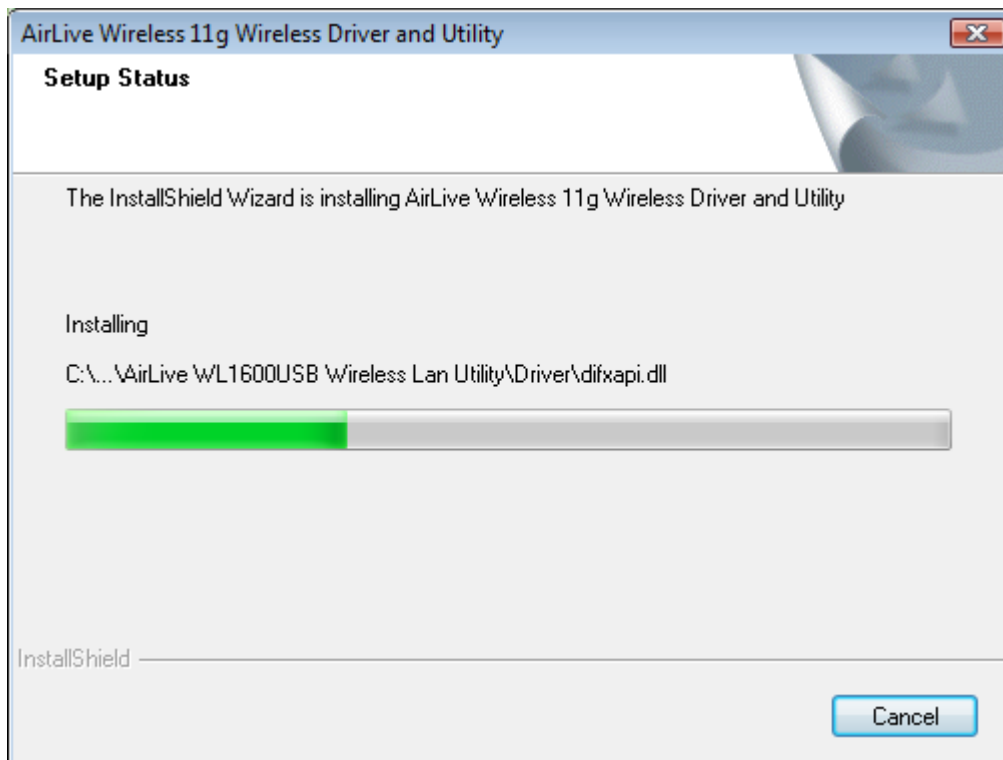
4. Click **Next**



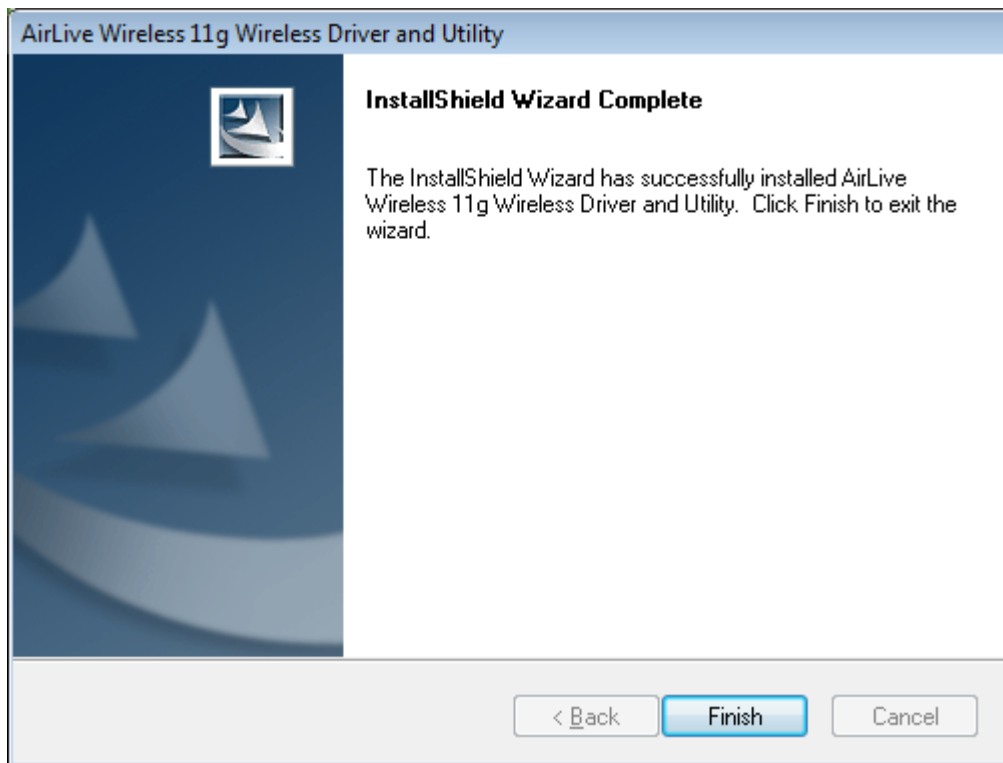
5. Click **Install**



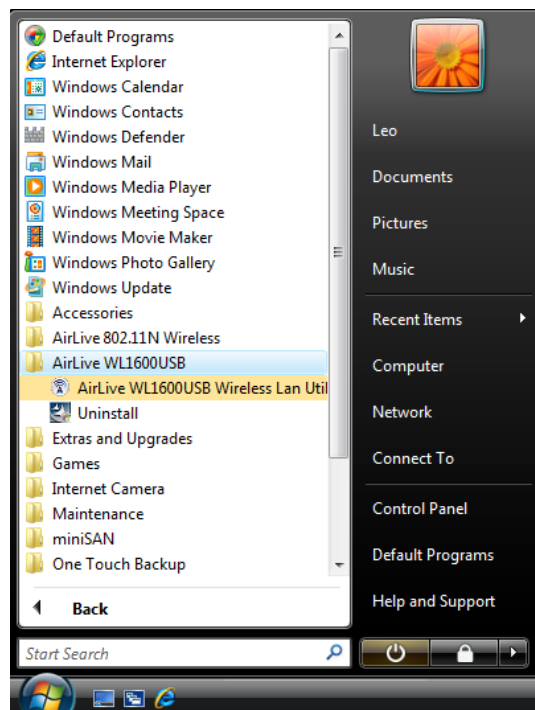
6. The system starts software installation of the WLAN USB adapter.



7. Click **Finish** to complete the installation



9. After click **Finish** to complete the installation, under Windows Vista <ALL Programs> menu, AirLive USB wireless LAN Utility program installed.

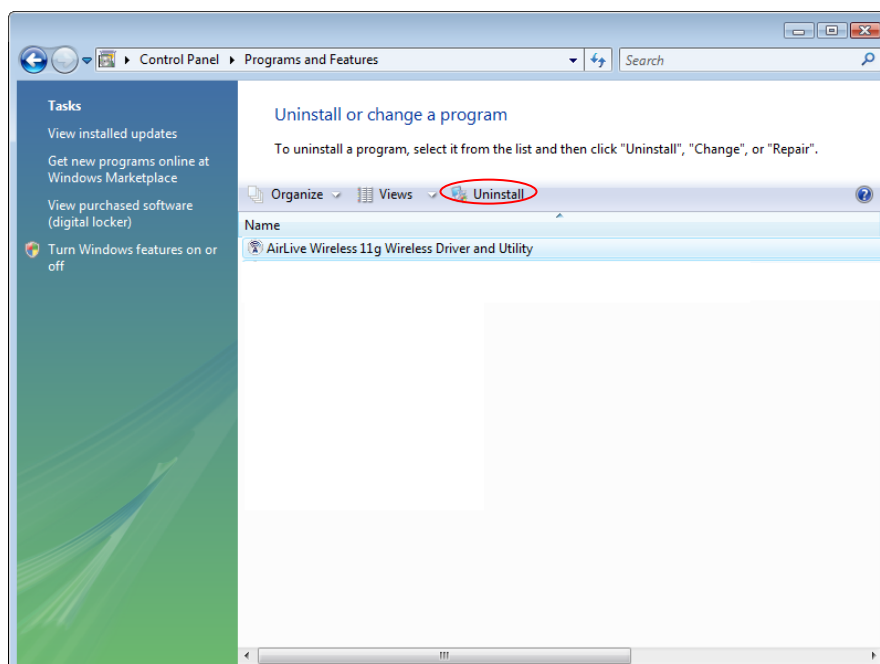
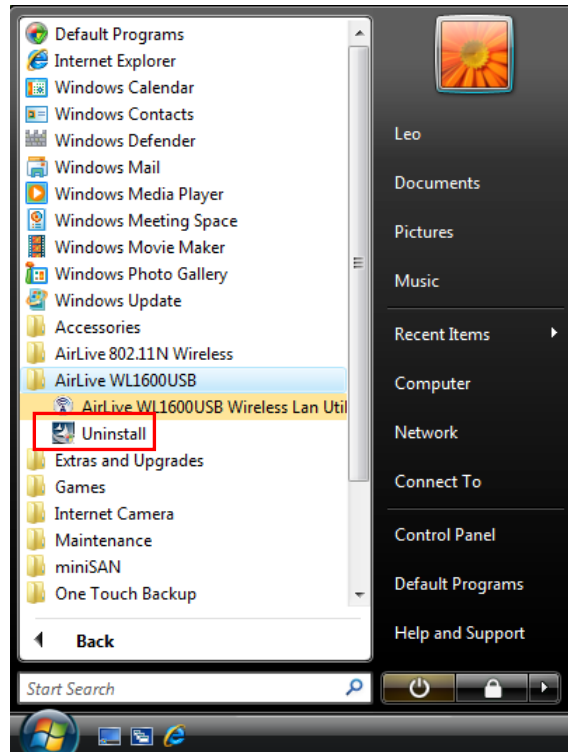


10. Insert the wireless LAN USB adapter into your computer USB port, the computer detect and drive the wireless LAN USB adapter automatically.

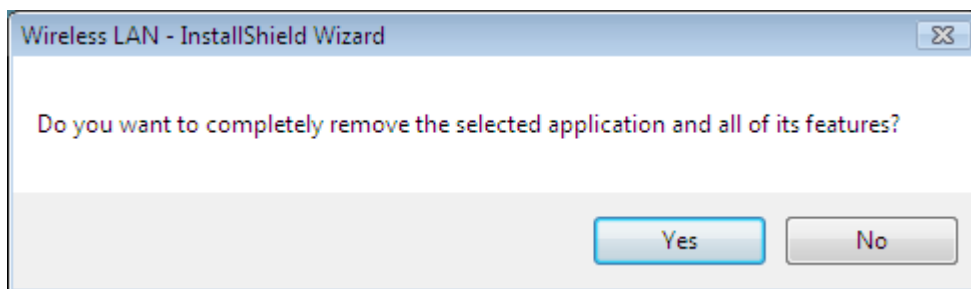
3.2 Uninstallation

From “Wireless Network Driver and Utility”, “Control Panel” ”Change or Remove Programs”.

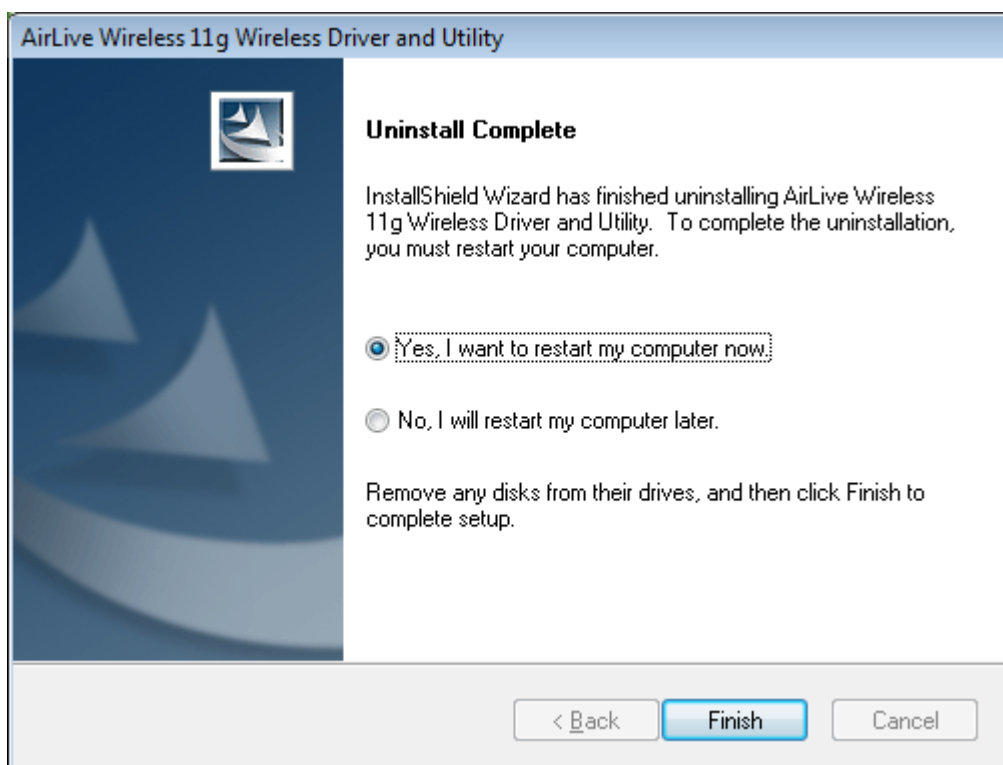
- A. Uninstall the WLAN USB Adapter Driver from “Start”, “All Programs”, Click “Uninstall” (or “Change/Remove”) to remove Wireless LAN USB Adapter driver.



B. Click **“Yes”** if you want to remove Wireless LAN USB Adapter Driver.



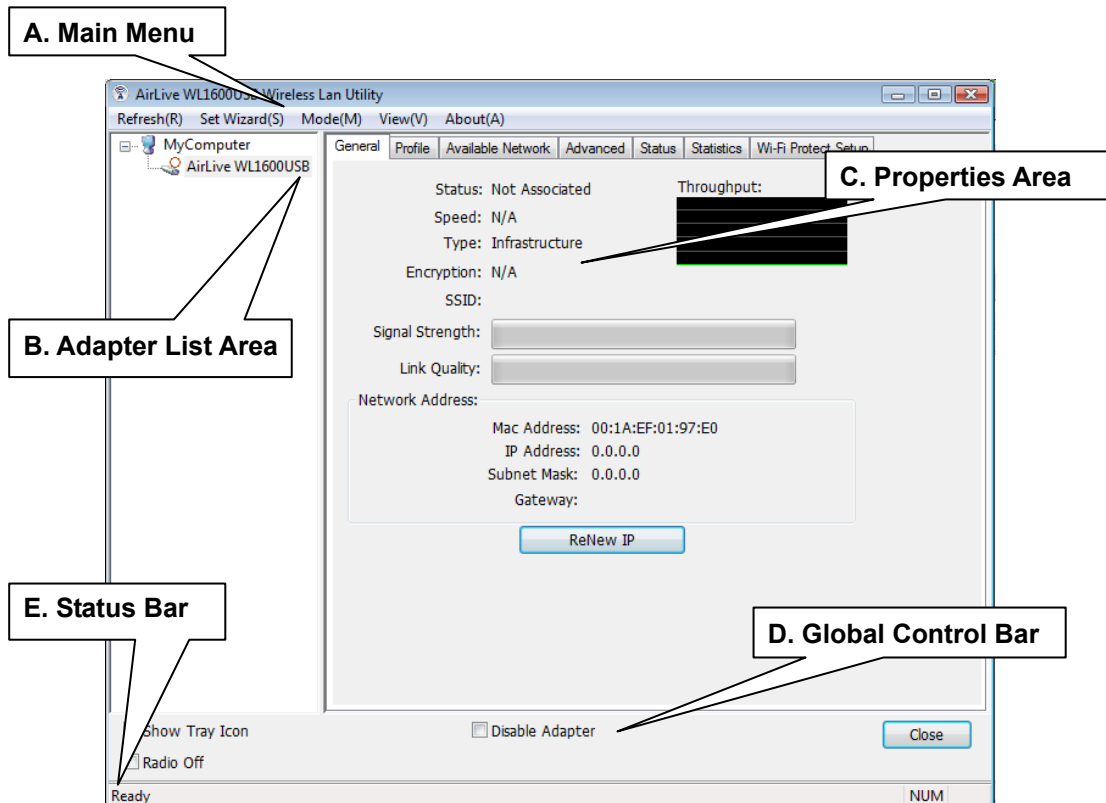
C. Click **“Finish”** to complete the uninstallation.



Chapter 4

Rt WLAN: Wireless LAN Management GUI

4.1 Introduction of Main Window



A. Main Menu

The main menu includes five submenus.

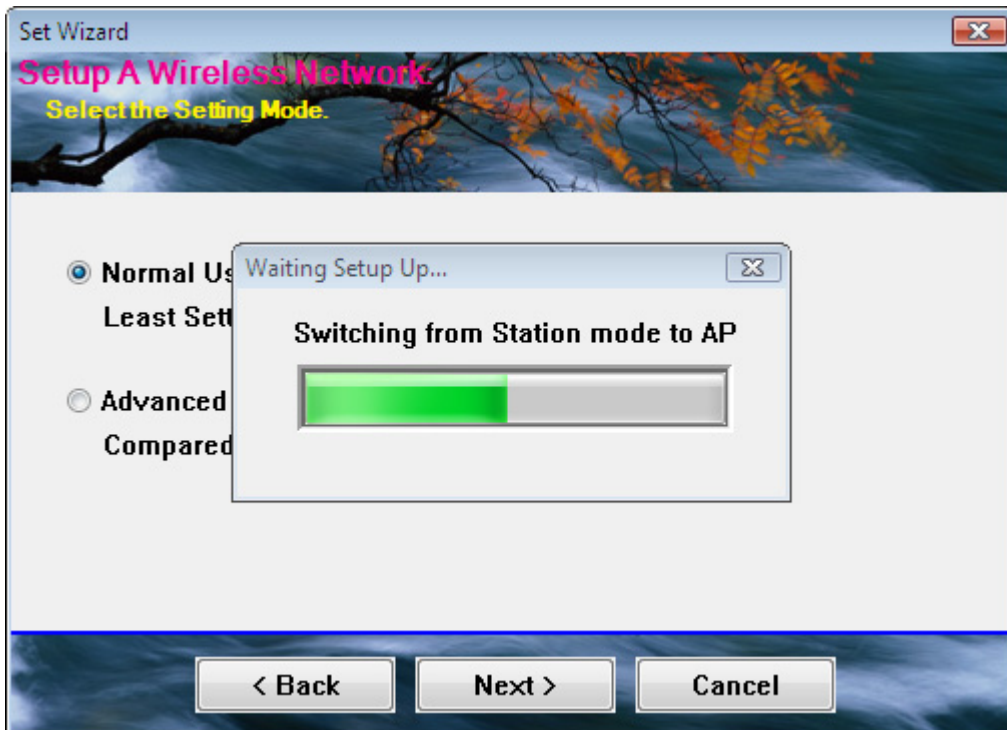
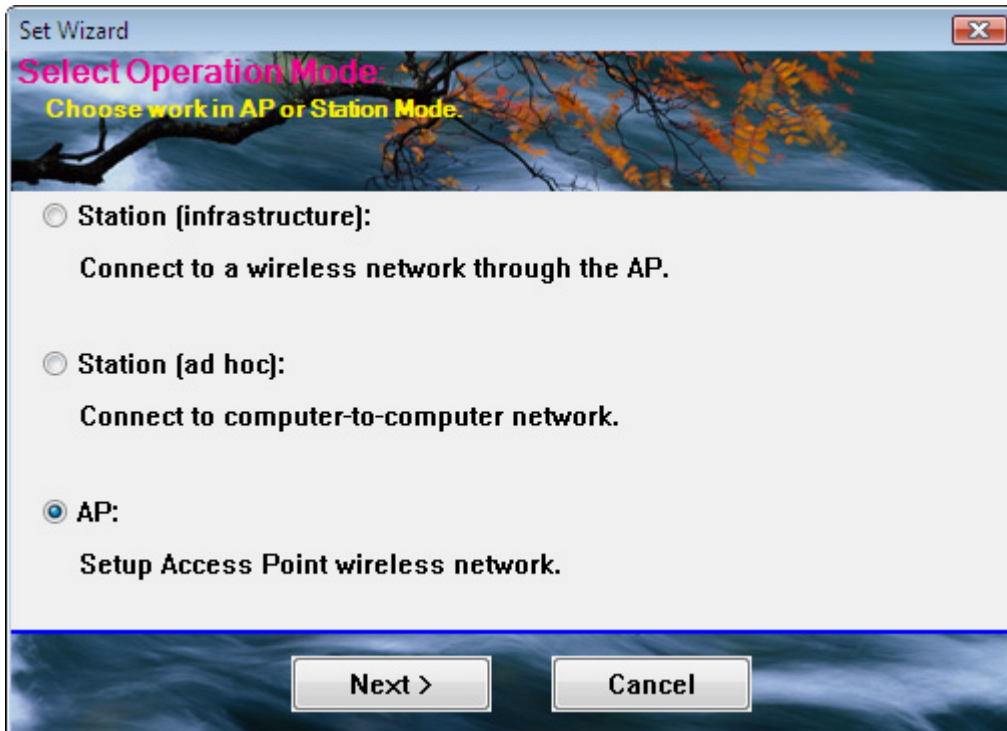
1.Refresh(R)

When clicking the refresh menu, you can update and re-enumerate the contents of adapter list area.

2. Set Wizard(S)

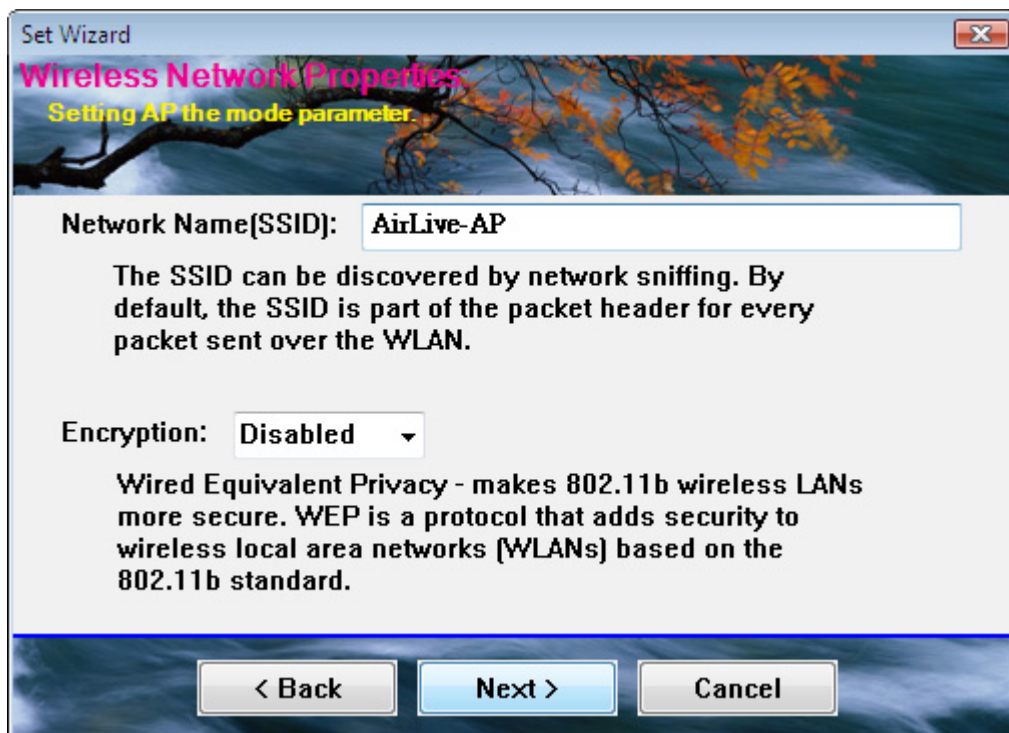
2.1 Wizard-1

Click Set Wizard(S) menu to enter operation wizard. Click AP: Setup a wireless network. To configure Access Point parameters.



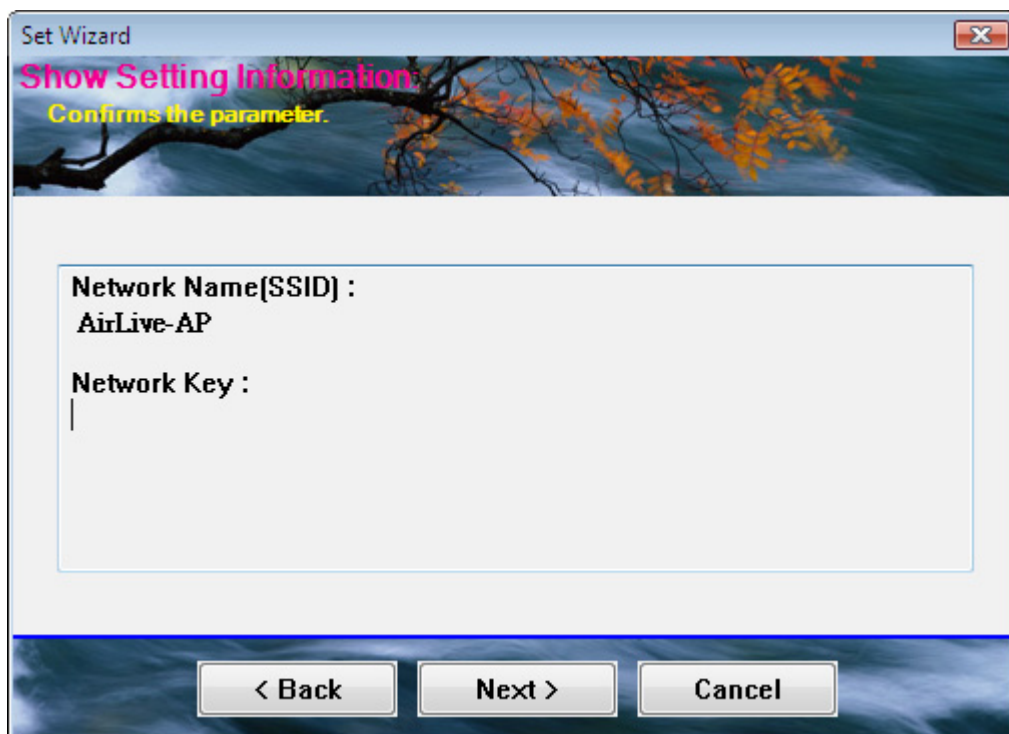
2.2 Wizard-2

User defines wireless network Name [SSID](less than 32 characters). User may skip wireless security. Strongly recommend user to setup wireless security to avoid invalid users..



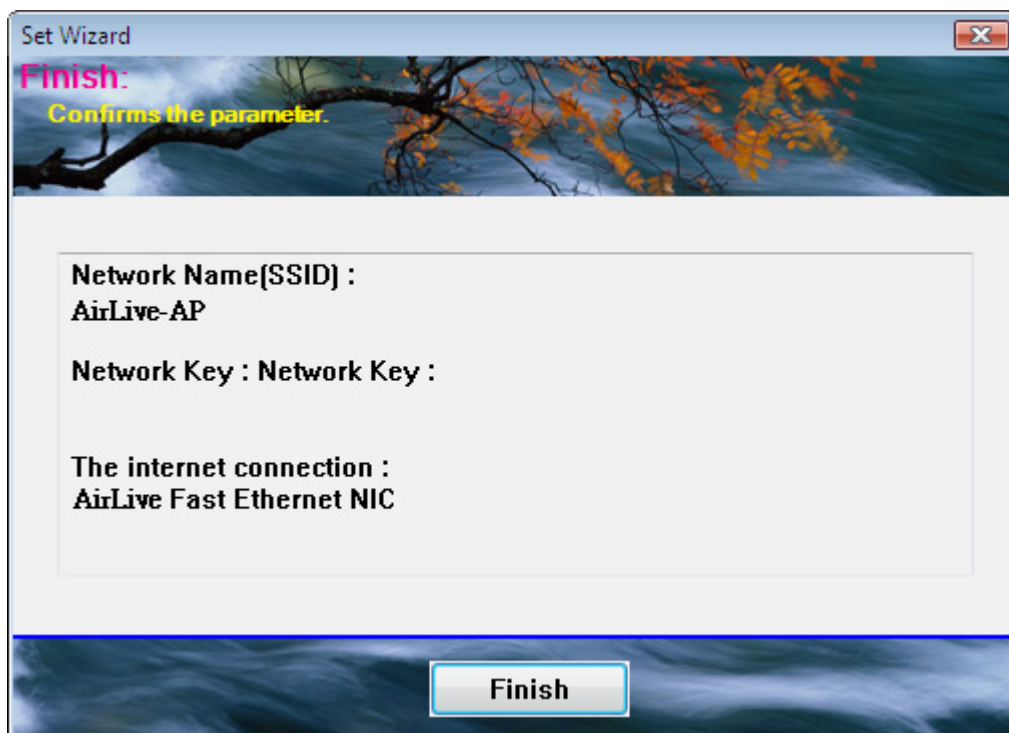
2.3 Wizard-3

This page shows SSID & Security settings .



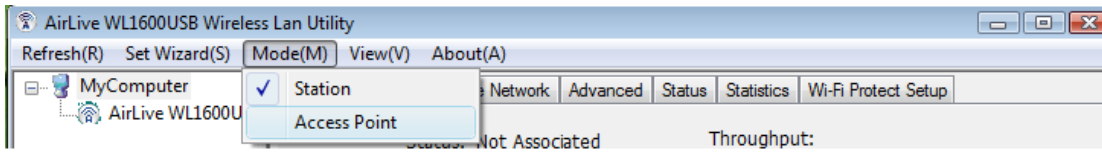
2.4 Wizard-4

Show all settings under AP mode. Click Finish to complete wizard setup.



3. Mode (M)

Wireless configuration is quickly switched to either [Station] or [AP].

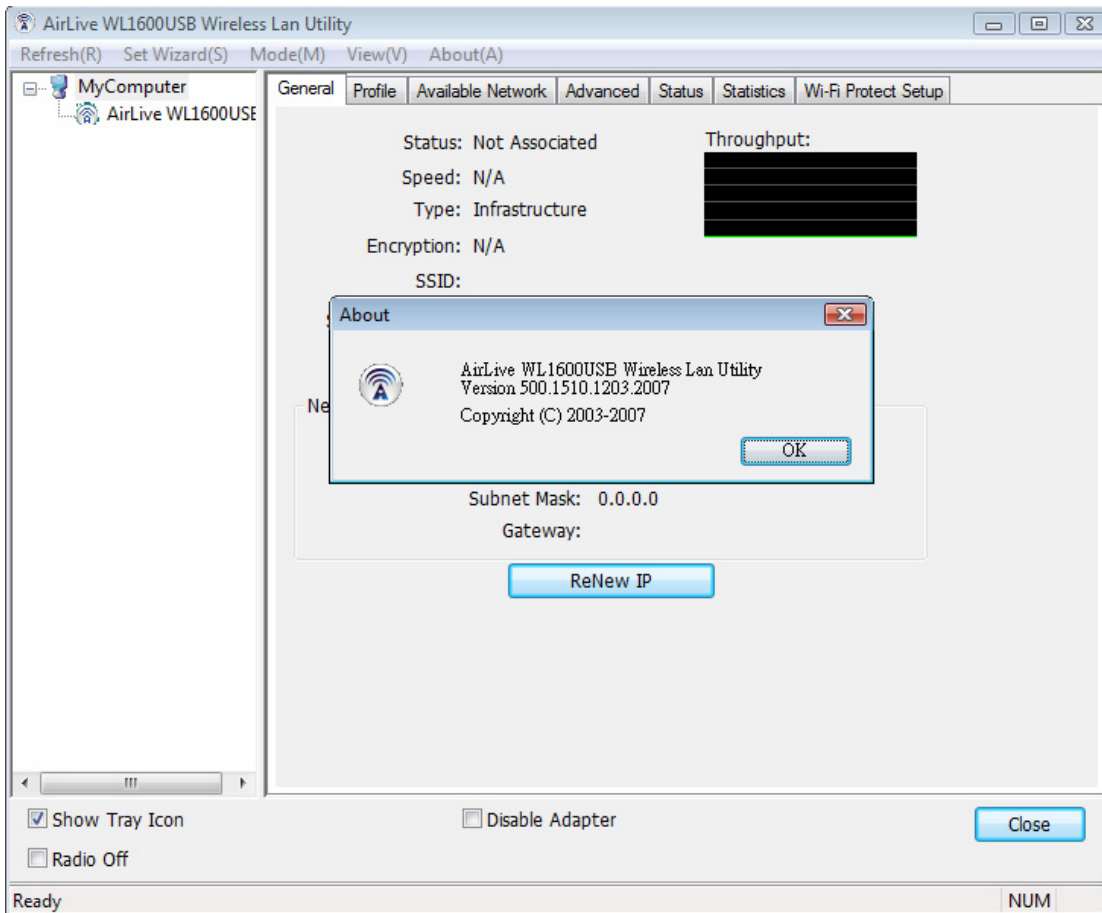


4. View (V)

Enable/disable the presence of E. Status Bar. Without the check mark (v) the E. Status Bar will be hidden.

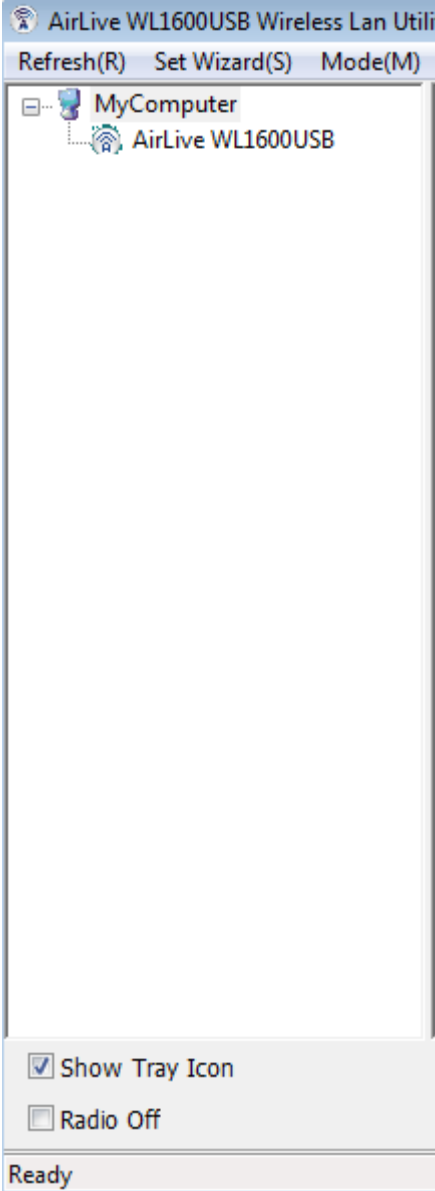
5. About(A)

Click the “About” to show the utility information dialog. The application version and license information are shown in utility information dialog.



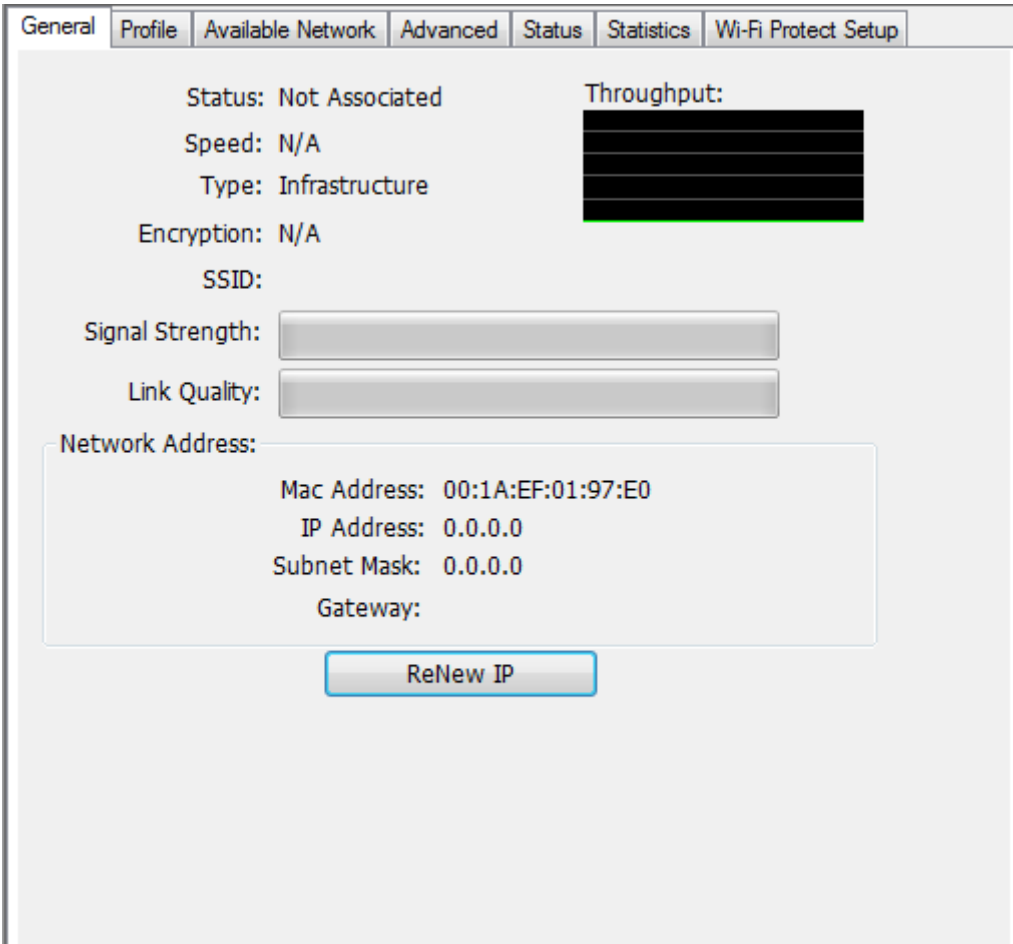
B. Adapter List Area

All connected adapters on this system with multiple adapter installations are displayed in this area. It is easy for users to change the selected adapter by one click. The contents of properties area are dependant on wireless configuration that the selected adapter is set up. If only single adapter is installed on the system, only one adapter is always selected.

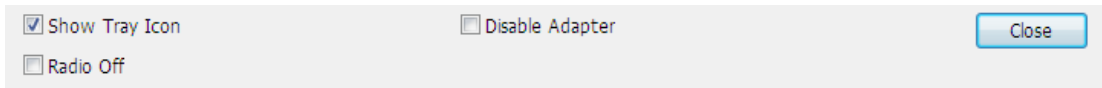


C. Properties Area

The contents of this area are dependent on current wireless configuration. The current configuration is determined on previous explanation of submenu "Mode". The more detailed contents are described in the following wireless configuration sections for both Station and AP mode.



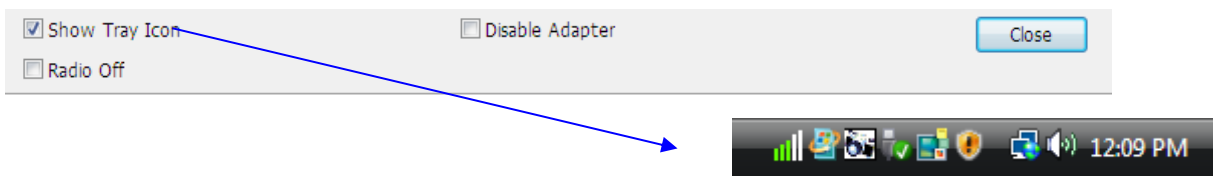
D. Global Control Bar



Each control item on this bar affects the adapter or management GUI directly.

Show Tray Icon

Checking "Show Tray Icon" and clicking "Close" button, the management GUI will be minimized and stay on the tray icon which is located at the right bottom corner of Windows. If not, management GUI will shut down while clicking "Close" button with unchecked condition

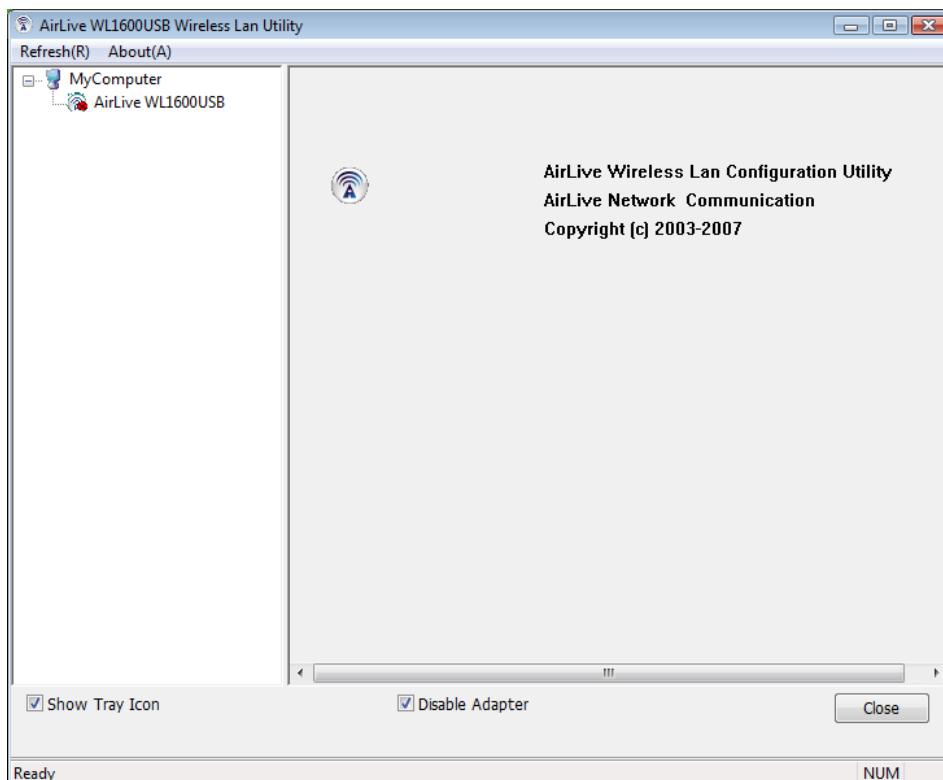


Radio Off

Turn off the radio to save power. While the radio is off, the links with other wireless network nodes are disconnected. User should be aware that while the wireless configuration is in AP mode. The radio off will cause the sub network which belongs to the AP to be disconnected with internet/intranet.

Disable Adapter

Stop wireless USB device.



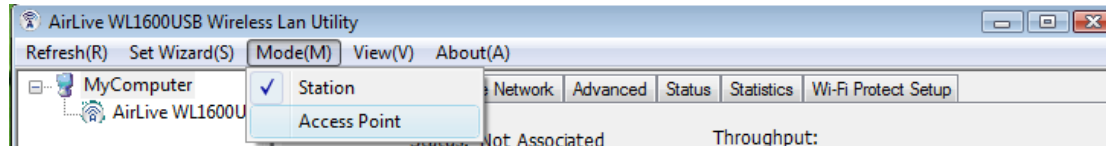
E. Status Bar

The hints or status of the management GUI are presented in the status bar.



4.2 Station Mode

The following explanations focus on the properties area.



Infrastructure and Ad-Hoc

With both Infrastructure and Ad-Hoc types, the properties should look like the picture above. Six property pages present different information of current wireless network status. Please read the following explanations before you reviewing these pages, it could help you to well understand the wireless environment around the system. It is easy to use to switch property pages just by clicking left button of mouse on the title of each page. The following six sections describe detailed information of each page.

A. General Page

This page represents the general information of this adapter.

General | Profile | Available Network | Advanced | Status | Statistics | Wi-Fi Protect Setup

Status: Not Associated Throughput:
Speed: N/A [Redacted]
Type: Infrastructure [Redacted]
Encryption: N/A
SSID:
Signal Strength: [Progress Bar]
Link Quality: [Progress Bar]

Network Address:
Mac Address: 00:1A:EF:01:97:E0
IP Address: 0.0.0.0
Subnet Mask: 0.0.0.0
Gateway:

1. Status

The status of station connection to AP.

2. Speed

Current transition speed in Mbps (Mega-Bits-Per-Second).

3. Type

Current wireless LAN configuration type.

4. Encryption

Current encryption mode used.

5. SSID

Name of wireless network.

6. Signal Strength

The average signal quality of packets received from wireless network.

We recommend connecting AP with over 70% signal strength.

7. Throughput Diagram

Current throughput, including transmission (Tx) and total traffic (Total).

8. Network Address

Mac Address: six two-digital number of this Wireless LAN USB adapter

IP Address: assigned network address by DHCP server or self-definition in four three-digital number format.

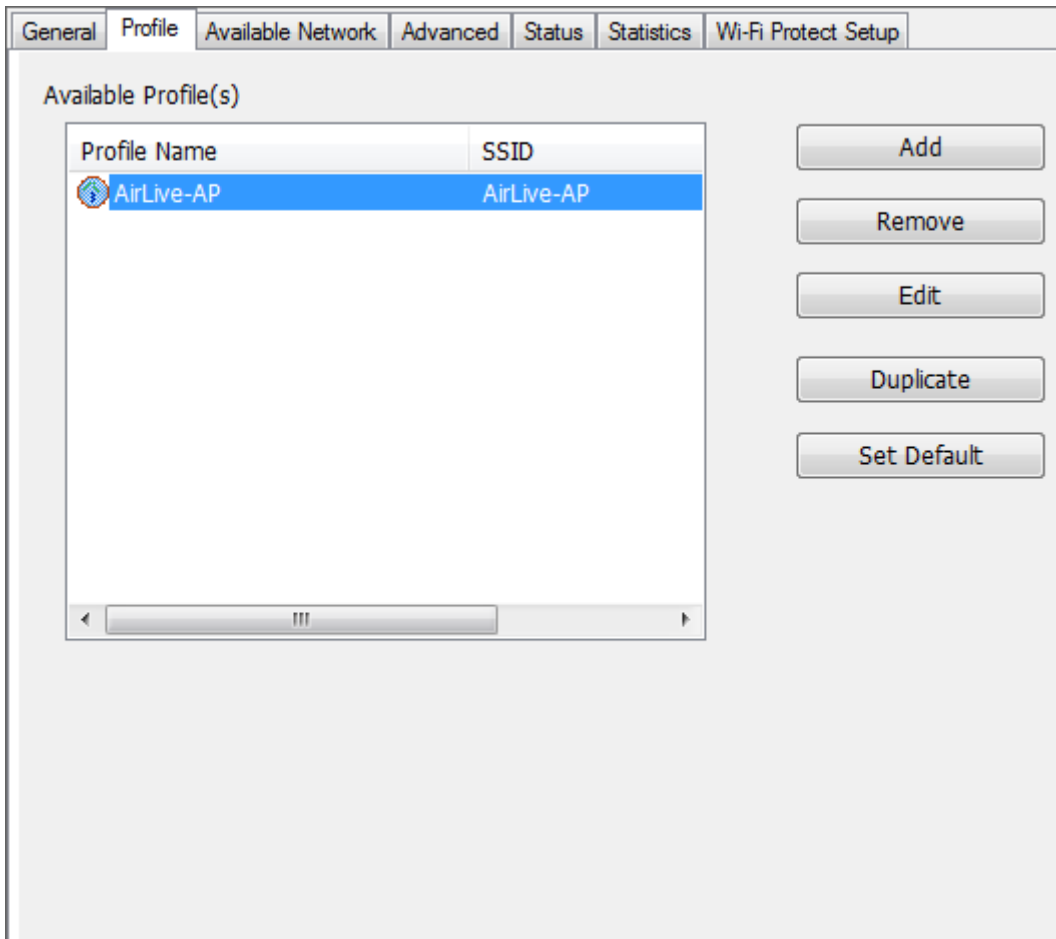
- Subnet Mask: the only valid value is 255.255.255.0
- Gateway: It comes from connected AP. Your system can not connect internet with this field empty.

B. Profile Page

This page provides profiles management such as add, remove, edit and duplicate just by pressing the respected button.

Available Profile(s)

The list box shows all the created profiles.



1. Add

Add a new profile for AP or IBSS (Ad-Hoc mode).

2. Remove

Remove the selected profile.

3. Edit

Edit contents of selected profile.

4. Duplicate

Make copy of selected profile.

5. Set Default

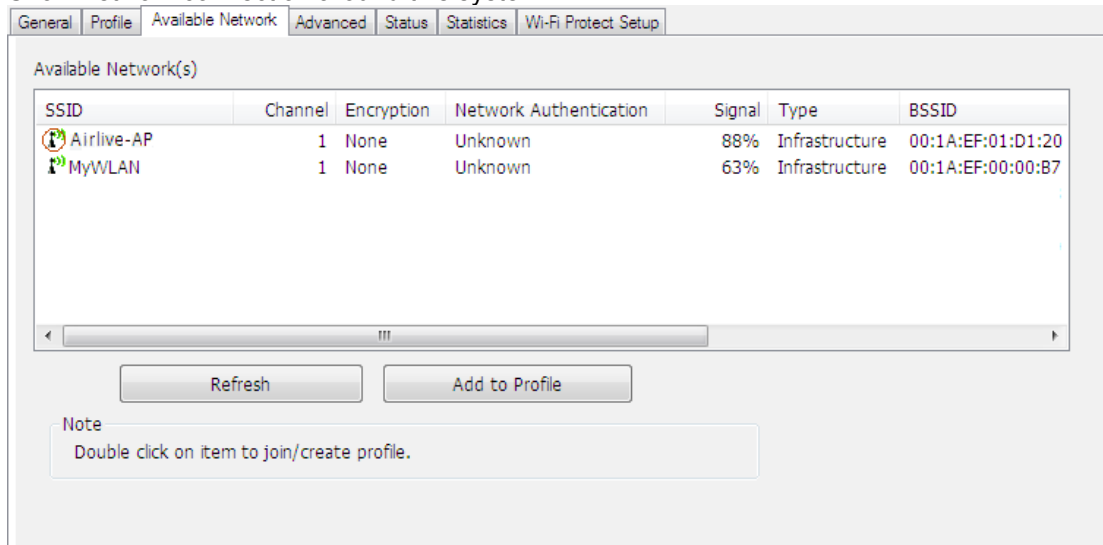
Set the selected profile as default selection.

6. Available Network Page

This page presents all BSS, including AP and IBSS, around this system. You can pick any one of these network connections.

C. Available Network(s)

Show network connection around this system



SSID	Channel	Encryption	Network Authentication	Signal	Type	BSSID
Airlive-AP	1	None	Unknown	88%	Infrastructure	00:1A:EF:01:D1:20
MyWLAN	1	None	Unknown	63%	Infrastructure	00:1A:EF:00:00:B7

Note
Double click on item to join/create profile.

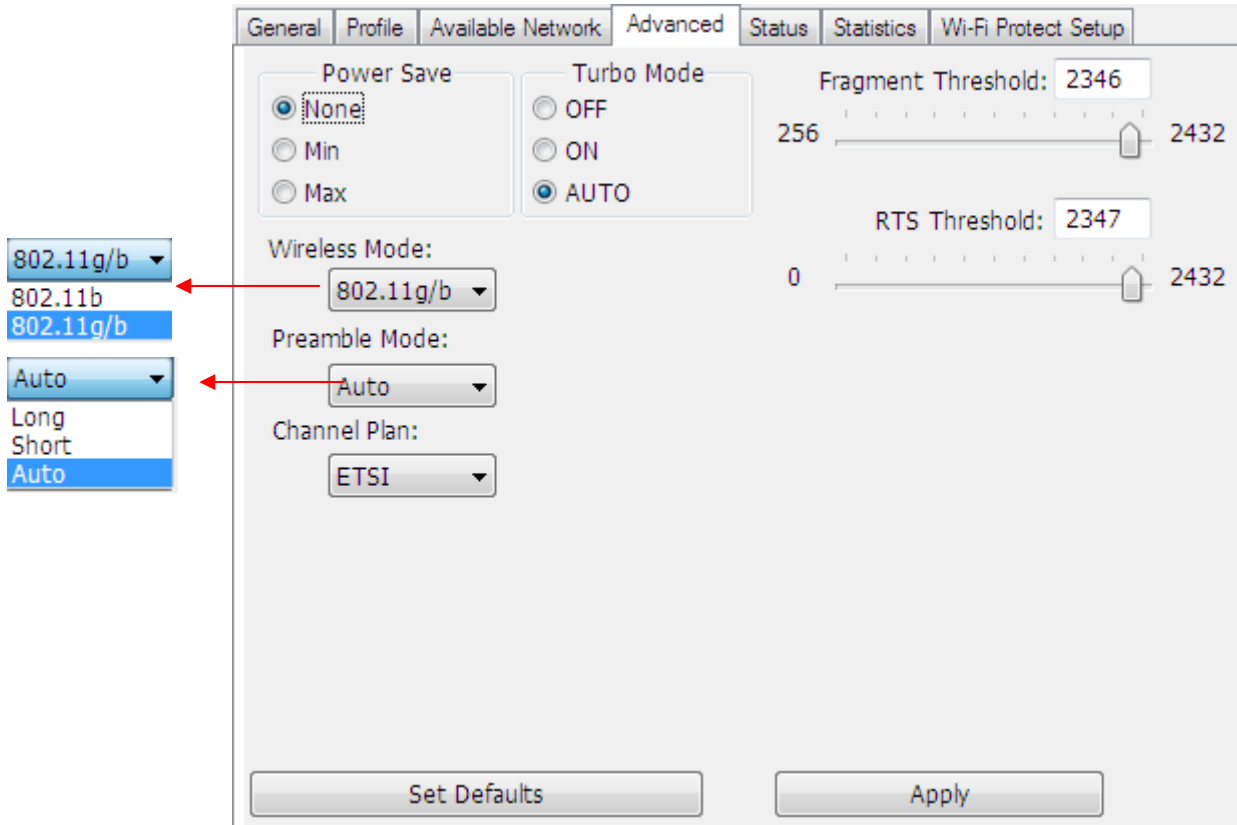
1. Refresh

Rescan network connection around this system.

2. Add to Profile

Create profile for selected network connection and add it to profile list.

D. Advanced Page



1. Power Save

None: without power save function.

Min: wake up more frequently to receive packets.

Max: wake up less frequently to receive packets.

2. Wireless Mode

802.11b

802.11g/b

3. 802.11b Preamble Mode

Long: higher quality but with lower performance than preamble short mode.

Short: Normal quality but with higher performance than preamble long mode.

Auto: use the preamble mode of current.

4. Fragment Threshold

The threshold of fragment length. Higher threshold increase data transition performance with good signal quality. However, in a poor signal quality environment, data throughput might be worse on high fragment threshold than low fragment threshold.

5. RTS Threshold

Threshold of Request To Send mechanism. The RTS frame will not send out until the packet size over threshold.

6. WOL (Wake On LAN)

The wake-on-LAN is applied for remote control purpose. You could wake up a system through network packets. For Wireless LAN USB Adapter, only the same adapter on another system could wake it up.

Input MAC Address: the six two-digit numbers of Wireless LAN USB Adapter on target system.

Wake Up: click this button to wake it up .

7. Set Defaults

Restore the default value to be current settings.

8. Apply

Apply the current settings to GUI.

E. Status Page

General	Profile	Available Network	Advanced	Status	Statistics	Wi-Fi Protect Setup
Manufacturer	Airlive					
NDIS Driver Version	6.1304.1119.2007					
Short Radio Header	Yes					
Encryption	Disabled					
Authenticate	Open					
Channel Set	ETSI					
MAC Address	00:E0:4C:81:87:01					
Data Rate (AUTO)	54 Mbps					
Channel (Frequency)	7 (2442 MHz)					
Status	Associated					
SSID	TEST2-AP					
Network Type	Infrastructure					
Power Save Mode	None					
Associated AP MAC	00:1A:EF:01:01:01					
Up Time (hh:mm:ss)	1:19:47					

1. NDIS Driver Version

Driver version

2. Short Radio Header

Yes

3. Encryption

Current encryption mode.

4. Authenticate

Authentication state

5. Channel Set

Selected channel plan currently.

6. MAC Address

MAC address of this adapter.

7. Data Rate

Wireless LAN transition speed

8. Channel(Frequency)

Current channel number

9. Status

Wireless network status

10. SSID: name of connecting AP

11. Network Type

Indicate current network configuration type

12. Power Save Mode

Current setting power save mode

13. Associated AP MAC

MAC address of connecting AP

14. Up Time

Total connection time

F. Statistics Page

You could watch the Tx/Rx status of current wireless connection. This page shows a statistic analysis of packet transition.

General Profile Available Network Advanced Status Statistics Wi-Fi Protect Setup

Counter Name	Value
Tx OK	153
Tx Error	0
Rx OK	1086
Rx Packet Count	1086
Rx Retry	2
Rx ICV Error	0

Reset

4.3 AP Mode

A. General Page

This page provides general information of this AP, including name, MAC address and list of joined stations.

General | Advanced | Statistics | ICS

SSID: Airlive-AP
BSSID: 00:E0:4C:81:87:01

Association Table

AID	Mac Address	Life Time
-----	-------------	-----------

1. SSID

The name of this AP.

2. BSSID

Six two-digit numbers of the MAC address of this AP.

3. Association Table

It is the list of joined stations to this AP.

4. AID (Association ID)

The AID field is a value assigned by an AP during association that represents 16-bit ID of a station.

It is a unique value assigned by AP.

5. MAC address

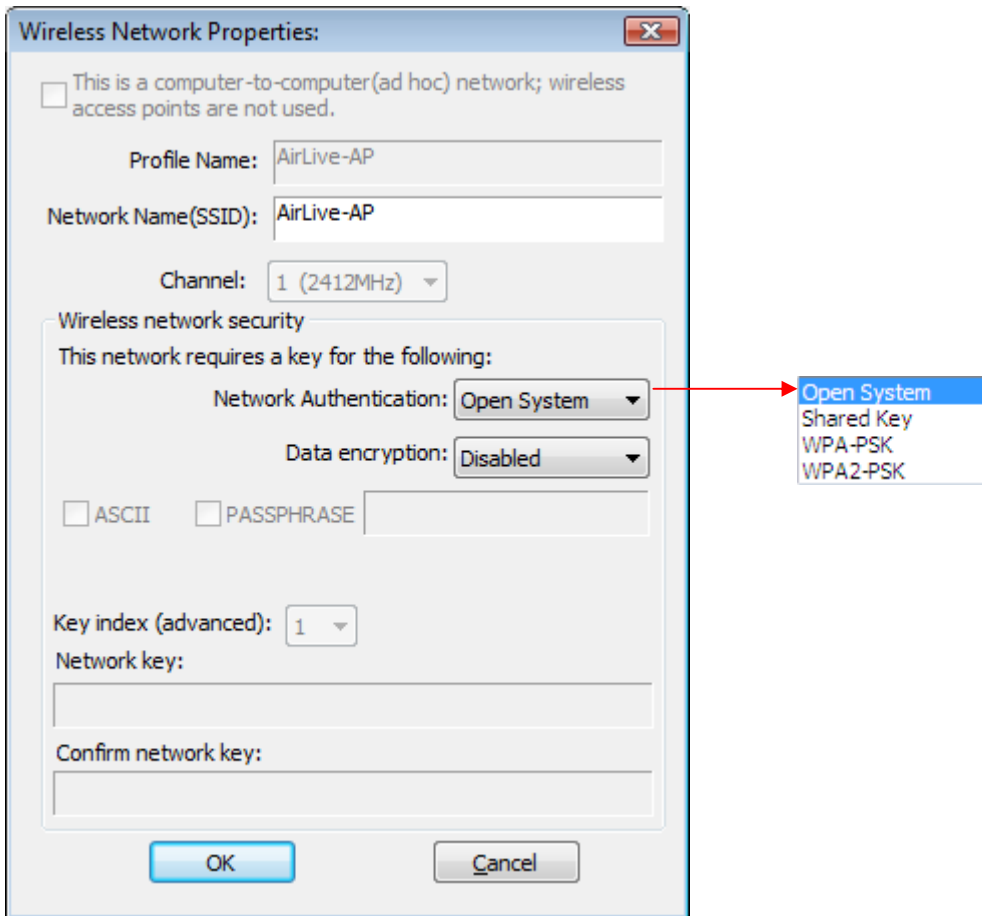
It is the six two-digit numbers that assemble the MAC address of respected joined station.

6. Life Time

It is the timer that counts down from 10 minutes whenever the AP connects the station successfully. If an STA associated to SW AP does not have any interaction with the AP in 10 minutes, it will be disassociated from the Infra-structure BSS.

7. Config

A dialog of this AP is shown for configuration modification.



7.1. Network Name (SSID)

Name of the AP searchable by other wireless nodes. The length of SSID should be shorter than 32 characters.

7.2. Channel

Select the wireless channel within current channel plan.

7.3. Network Authentication & Data Encryption

There are three types of authentication:

- Open System

It is combined with data encryption type to be WEP or to be disabled.

Encryption ~ disabled: you decide to open this AP to every one without network authentication.

Encryption ~ WEP: you decide to setup the basic data encryption with a defined network key.

- Shared Key + WEP

You decide to apply both authentication and data encryption to prevent unauthorized login.

- WPA-PSK + TKIP & WPA2-PSK + TKIP

The most advanced authentication and data encryption that provide the best security protection.

7.4. ASCII/ PASSPHRASE

The most advanced authentication and data encryption that provide the best security protection.

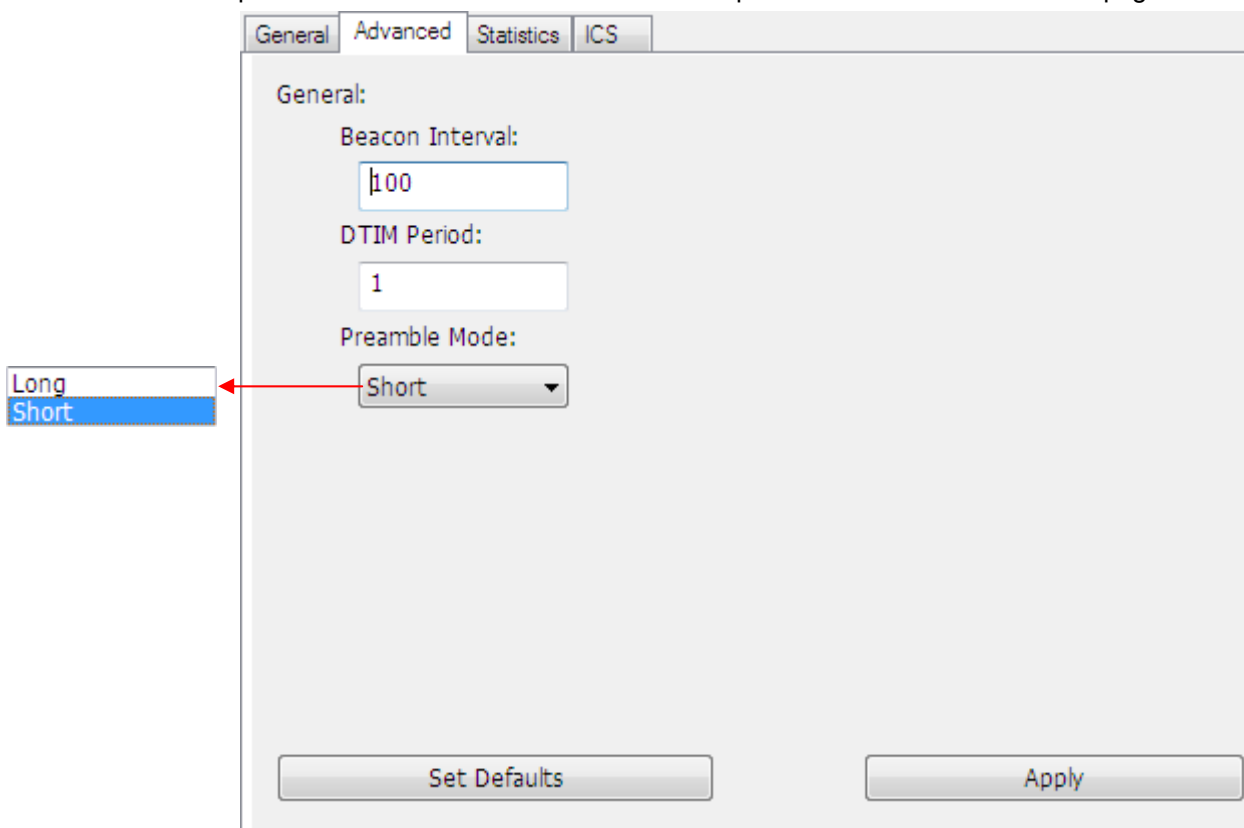
- ASCII: You should provide either 5 or 13 ASCII characters on Network key edit box.
- PASSPHRASE: You could input words on Network Key edit box.
 - 64 bits: The generated pass key is 64-bit to be complied with data packets.
 - 128 bits: The generated pass key is 128-bit to be complied with data packets.
- Hexadecimal: While both ASCII and PASSPHRASE are not checked, you should input hexadecimal number in the network key box. For example, 10 digits hex number for 64-bit WEP or 26 digits hex number for 128-bit WEP.

7.5. Key index (1 ~4)

At most four key index to represent the opposite network key.

B. Advanced Page

Users could setup the advanced characteristics of network packet for transmission on this page.



1. Beacon Interval

This field indicates the interval between each beacon that this AP sends out in unit of TU (1024 micro-seconds).

2. DTIM Period

The DTIM Period field is the number of Beacon intervals between successive DTIMs.

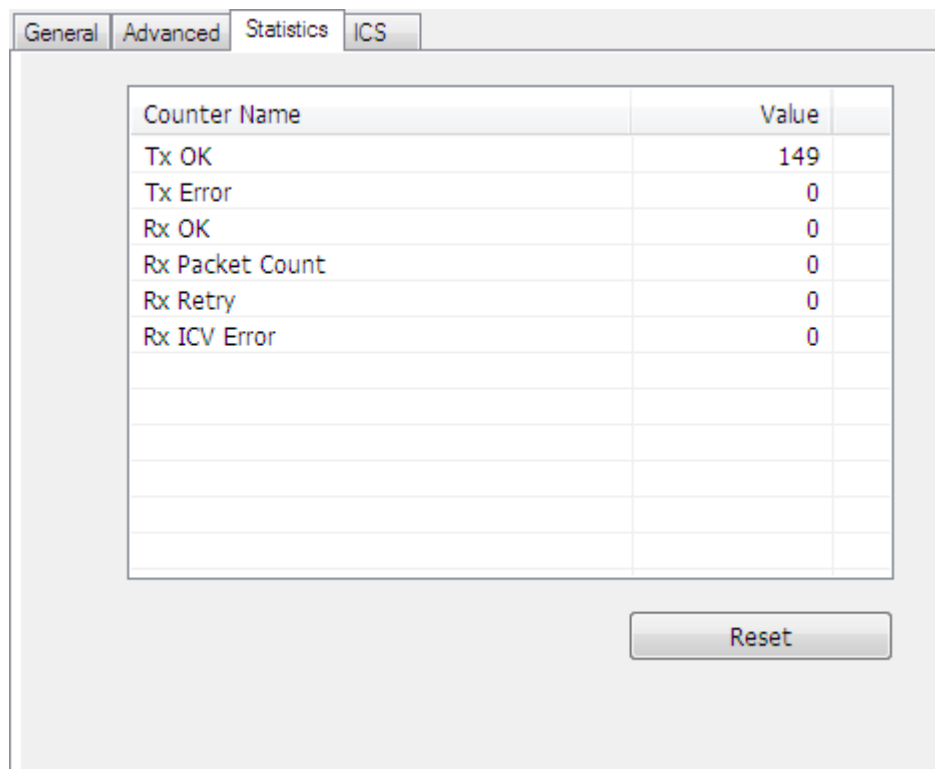
3. Preamble Mode

- Long: higher quality but with lower performance than preamble short mode.
- Short: Normal quality but with higher performance than preamble long mode.

- Auto: select the proper preamble mode by current signal frame information.

C. Statistics Page

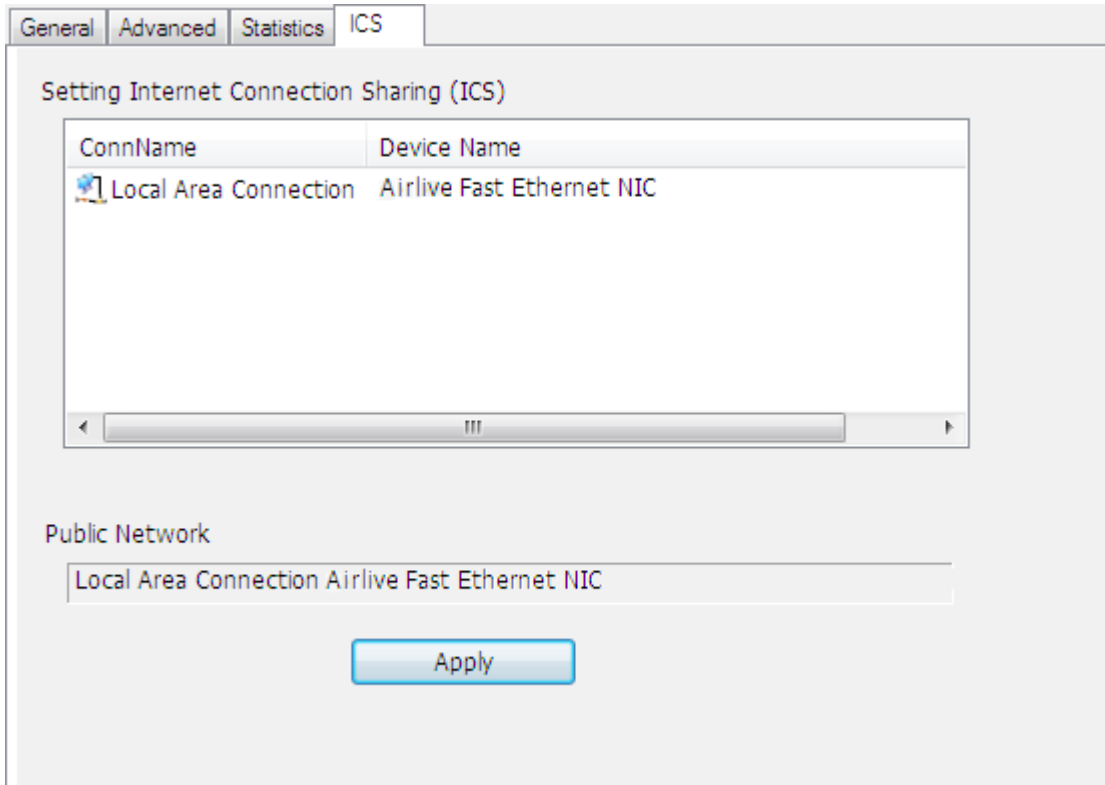
The Tx/Rx status of current wireless connection is shown. A statistic analysis of packet transition is listed.



Counter Name	Value
Tx OK	149
Tx Error	0
Rx OK	0
Rx Packet Count	0
Rx Retry	0
Rx ICV Error	0

Reset

D. ICS Page



1. ConnName

List all network connections to this system. You can pick up one from the listed item(s) whose network domain you would want to connect to.

2. Select

Make the desired network connection to public network.

3. ICS

Internet Connection Sharing. It enables this AP to create the domain to share this internet/intranet network connection.

4. Firewall

Any of a number of security schemes that prevents unauthorized users from gaining access to a computer network, or that monitors transfers of information to and from the network.

5. Apply

Execute the current settings.